

# TDE2L rabbit pAb

Cat No.:ES3578

For research use only

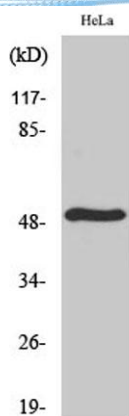
## Overview

Product Name	TDE2L rabbit pAb
Host species	Rabbit
Applications	WB;IHC;IF;ELISA
Species Cross-Reactivity	Human;Mouse;Rat
Recommended dilutions	Western Blot: 1/500 - 1/2000. Immunohistochemistry: 1/100 - 1/300. Immunofluorescence: 1/200 - 1/1000. ELISA: 1/40000. Not yet tested in other applications.
Immunogen	The antiserum was produced against synthesized peptide derived from human SERC2. AA range:341-390
Specificity	TDE2L Polyclonal Antibody detects endogenous levels of TDE2L protein.
Formulation	Liquid in PBS containing 50% glycerol, 0.5% BSA and 0.02% sodium azide.
Storage	Store at -20°C. Avoid repeated freeze-thaw cycles.
Protein Name	Serine incorporator 2
Gene Name	SERINC2
Cellular localization	Membrane ; Multi-pass membrane protein .
Purification	The antibody was affinity-purified from rabbit antiserum by affinity-chromatography using epitope-specific immunogen.
Clonality	Polyclonal
Concentration	1 mg/ml
Observed band	55kD
Human Gene ID	347735
Human Swiss-Prot Number	Q96SA4
Alternative Names	SERINC2; TDE2L; FKSG84; Serine incorporator 2; Tumor differentially expressed protein 2-like
Background	similarity:Belongs to the TDE1 family.,



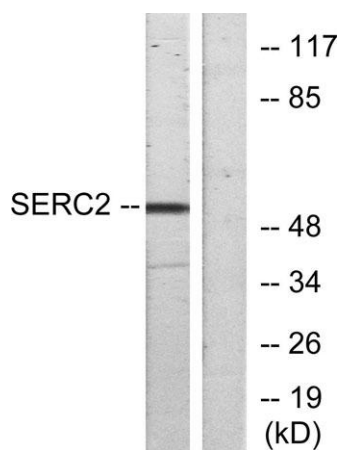
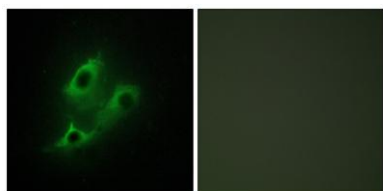


**ELK Biotechnology**



Western Blot analysis of various cells using TDE2L  
Polyclonal Antibody

Immunofluorescence analysis of NIH/3T3 cells, using  
SERC2 Antibody. The picture on the right is blocked with  
the synthesized peptide.



Western blot analysis of lysates from HeLa cells, using  
SERC2 Antibody. The lane on the right is blocked with the  
synthesized peptide.



+86-27-59760950

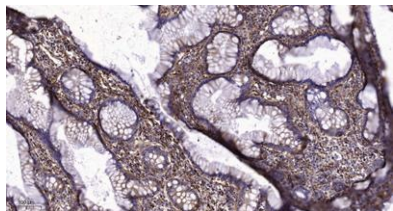
[ELKbio@ELKbiotech.com](mailto:ELKbio@ELKbiotech.com)

[www.elkbiotech.com](http://www.elkbiotech.com)

23-2, No.388 Gaoxin 2nd Road, Wuhan East Lake Hi-tech Development Zone, Hubei, P.R.C.



**ELK Biotechnology**



Immunohistochemical analysis of paraffin-embedded human colon cancer. 1, Tris-EDTA, pH9.0 was used for antigen retrieval. 2 Antibody was diluted at 1:200(4° overnight). 3, Secondary antibody was diluted at 1:200(room temperature, 45min).



+86-27-59760950

[ELKbio@ELKbiotech.com](mailto:ELKbio@ELKbiotech.com)

[www.elkbiotech.com](http://www.elkbiotech.com)

23-2, No.388 Gaoxin 2nd Road, Wuhan East Lake Hi-tech Development Zone, Hubei, P.R.C.