

TDE1 rabbit pAb

Cat No.:ES3577

For research use only

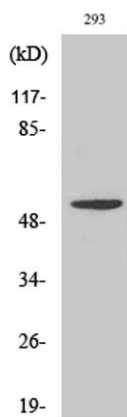
Overview

Product Name	TDE1 rabbit pAb
Host species	Rabbit
Applications	WB;IHC;IF;ELISA
Species Cross-Reactivity	Human;Mouse;Rat
Recommended dilutions	Western Blot: 1/500 - 1/2000. Immunohistochemistry: 1/100 - 1/300. Immunofluorescence: 1/200 - 1/1000. ELISA: 1/20000. Not yet tested in other applications.
Immunogen	The antiserum was produced against synthesized peptide derived from human SERC3. AA range:361-410
Specificity	TDE1 Polyclonal Antibody detects endogenous levels of TDE1 protein.
Formulation	Liquid in PBS containing 50% glycerol, 0.5% BSA and 0.02% sodium azide.
Storage	Store at -20°C. Avoid repeated freeze-thaw cycles.
Protein Name	Serine incorporator 3
Gene Name	SERINC3
Cellular localization	Cell membrane ; Multi-pass membrane protein . Golgi apparatus membrane ; Multi-pass membrane protein .; Cytoplasm, perinuclear region . (Microbial infection) Upon HIV-1 infection, it is redirected to perinuclear region following interaction with HIV-1 Nef, excluding it from virions particles, thereby preventing subsequent antiviral defense activity (Probable). .
Purification	The antibody was affinity-purified from rabbit antiserum by affinity-chromatography using epitope-specific immunogen.
Clonality	Polyclonal
Concentration	1 mg/ml
Observed band	52kD
Human Gene ID	10955
Human Swiss-Prot Number	Q13530
Alternative Names	SERINC3; DIFF33; TDE1; SBBI99; Serine incorporator 3;



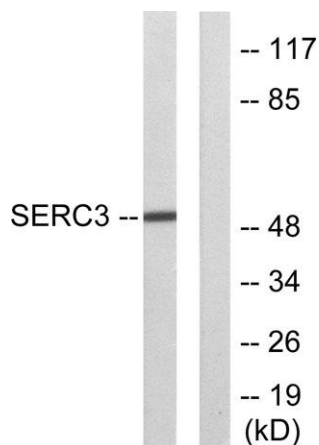
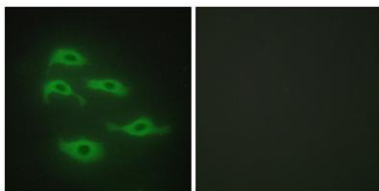
Background

Tumor differentially expressed protein 1
 function: May be involved in cellular transformation., PTM: N-glycosylated., similarity: Belongs to the TDE1 family., tissue specificity: Ubiquitous.
 Expression levels were increased fourfold to tenfold in lung tumor tissues compared with normal pulmonary tissues.,



Western Blot analysis of various cells using TDE1 Polyclonal Antibody

Immunofluorescence analysis of HepG2 cells, using SERC3 Antibody. The picture on the right is blocked with the synthesized peptide.

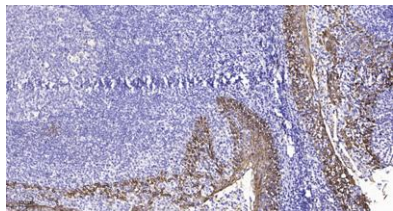


Western blot analysis of lysates from 293 cells, using SERC3 Antibody. The lane on the right is blocked with the synthesized peptide.





ELK Biotechnology



Immunohistochemical analysis of paraffin-embedded human tonsil. 1, Antibody was diluted at 1:200(4° overnight). 2, Tris-EDTA,pH9.0 was used for antigen retrieval. 3,Secondary antibody was diluted at 1:200(room temperature, 45min).



+86-27-59760950

ELKbio@ELKbiotech.com

www.elkbiotech.com

23-2, No.388 Gaoxin 2nd Road,Wuhan East Lake Hi-tech Development Zone, Hubei , P.R.C