

TCF-1 rabbit pAb

Cat No.:ES3572

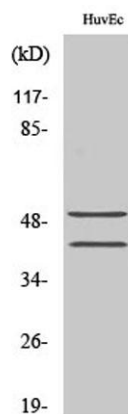
For research use only

Overview

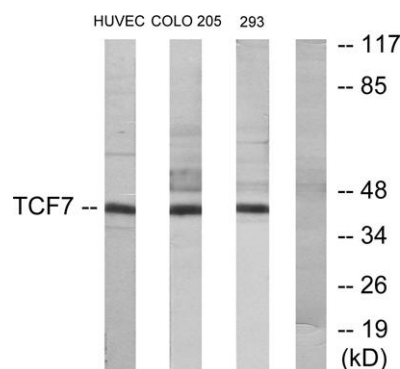
Product Name	TCF-1 rabbit pAb
Host species	Rabbit
Applications	WB;IHC;IF;ELISA
Species Cross-Reactivity	Human;Mouse
Recommended dilutions	Western Blot: 1/500 - 1/2000. Immunohistochemistry: 1/100 - 1/300. ELISA: 1/10000. Not yet tested in other applications.
Immunogen	The antiserum was produced against synthesized peptide derived from human TCF7. AA range:10-59
Specificity	TCF-1 Polyclonal Antibody detects endogenous levels of TCF-1 protein.
Formulation	Liquid in PBS containing 50% glycerol, 0.5% BSA and 0.02% sodium azide.
Storage	Store at -20°C. Avoid repeated freeze-thaw cycles.
Protein Name	Transcription factor 7
Gene Name	TCF7
Cellular localization	Nucleus.
Purification	The antibody was affinity-purified from rabbit antiserum by affinity-chromatography using epitope-specific immunogen.
Clonality	Polyclonal
Concentration	1 mg/ml
Observed band	42kD
Human Gene ID	6932
Human Swiss-Prot Number	P36402
Alternative Names	TCF7; TCF1; Transcription factor 7; TCF-7; T-cell-specific transcription factor 1; T-cell factor 1; TCF-1
Background	alternative products:2 series of isoforms, L and S, are produced by use of alternative promoter usage. Additional isoforms seem to exist,function:Transcriptional activator involved in T-cell lymphocyte differentiation. Necessary for the



survival of CD4(+) CD8(+) immature thymocytes. Isoforms lacking the N-terminal CTNNB1 binding domain cannot fulfill this role. Binds to the T-lymphocyte-specific enhancer element (5'-WWCAAAG-3') found in the promoter of the CD3E gene. May also act as feedback transcriptional repressor of CTNNB1 and TCF7L2 target genes. TLE1, TLE2, TLE3 and TLE4 repress transactivation mediated by TCF7 and CTNNB1.,induction:By TCF7L2 and CTNNB1.,sequence caution:Wrong choice of frame.,similarity:Belongs to the TCF/LEF family.,similarity:Contains 1 HMG box DNA-binding domain.,subunit:Binds the armadillo repeat of CTNNB1 and forms a stable complex. Interacts with AES, TLE1, TLE2, TLE3 and TLE4.,tissue specificity:Predominantly in T-cells. Also detected in proliferating intestinal epithelial cells and in the basal epithelial cells of mammary gland epithelium.,



Western Blot analysis of various cells using TCF-1 Polyclonal Antibody diluted at 1:1000 cells nucleus extracted by Minute TM Cytoplasmic and Nuclear Fractionation kit (SC-003, Invent biotech, MN, USA).

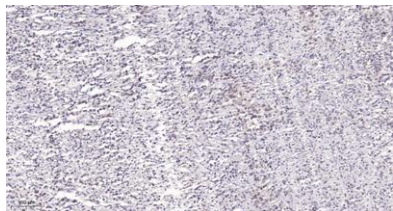


Western blot analysis of lysates from HUVEC, COLO205, and 293 cells, using TCF7 Antibody. The lane on the right is blocked with the synthesized peptide.





ELK Biotechnology



Immunohistochemical analysis of paraffin-embedded human Small intestinal stromal tumor. 1, Tris-EDTA,pH9.0 was used for antigen retrieval. 2 Antibody was diluted at 1:200(4° overnight.3,Secondary antibody was diluted at 1:200(room temperature, 45min).



+86-27-59760950

ELKbio@ELKbiotech.com

www.elkbiotech.com

23-2, No.388 Gaoxin 2nd Road,Wuhan East Lake Hi-tech Development Zone, Hubei , P.R.C