



# TAAR3 rabbit pAb

Cat No.:ES3548

For research use only

## Overview

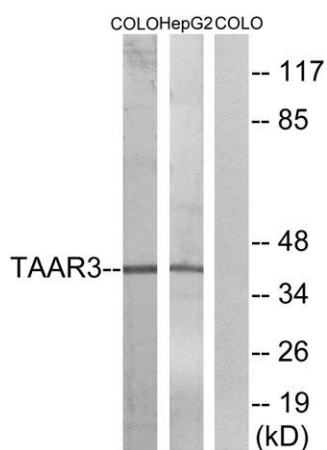
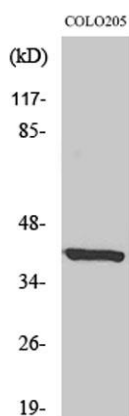
Product Name	TAAR3 rabbit pAb
Host species	Rabbit
Applications	WB;IF;ELISA
Species Cross-Reactivity	Human;Rat;Mouse;
Recommended dilutions	Western Blot: 1/500 - 1/2000. Immunofluorescence: 1/200 - 1/1000. ELISA: 1/10000. Not yet tested in other applications.
Immunogen	The antiserum was produced against synthesized peptide derived from human TAAR3. AA range:206-255
Specificity	TAAR3 Polyclonal Antibody detects endogenous levels of TAAR3 protein.
Formulation	Liquid in PBS containing 50% glycerol, 0.5% BSA and 0.02% sodium azide.
Storage	Store at -20°C. Avoid repeated freeze-thaw cycles.
Protein Name	Putative trace amine-associated receptor 3
Gene Name	TAAR3
Cellular localization	Cell membrane ; Multi-pass membrane protein .
Purification	The antibody was affinity-purified from rabbit antiserum by affinity-chromatography using epitope-specific immunogen.
Clonality	Polyclonal
Concentration	1 mg/ml
Observed band	39kD
Human Gene ID	9288
Human Swiss-Prot Number	Q9P1P4
Alternative Names	TAAR3; GPR57; Putative trace amine-associated receptor 3; TaR-3; Trace amine receptor 3; G-protein coupled receptor 57
Background	caution:Seems to be a non functional due to its divergence in positions 20 to 45 (due to a frameshift) but does not seem to be the product of a pseudogene.,function:Orphan



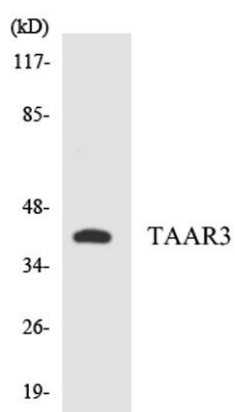


receptor.,similarity:Belongs to the G-protein coupled receptor 1 family.,tissue specificity:Not expressed in the pons, thalamus, globus pallidus, caudate, putamen or cerebellum.,

Western Blot analysis of various cells using TAAR3 Polyclonal Antibody



Western blot analysis of lysates from COLO and HepG2 cells, using TAAR3 Antibody. The lane on the right is blocked with the synthesized peptide.



Western blot analysis of the lysates from HepG2 cells using TAAR3 antibody.

