

T2R39 rabbit pAb

Cat No.:ES3545

For research use only

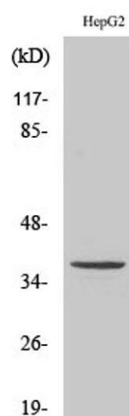
Overview

Product Name	T2R39 rabbit pAb
Host species	Rabbit
Applications	WB;IF;ELISA
Species Cross-Reactivity	Human;Rat;Mouse;
Recommended dilutions	Western Blot: 1/500 - 1/2000. Immunofluorescence: 1/200 - 1/1000. ELISA: 1/20000. Not yet tested in other applications.
Immunogen	The antiserum was produced against synthesized peptide derived from human TAS2R39. AA range:218-267
Specificity	T2R39 Polyclonal Antibody detects endogenous levels of T2R39 protein.
Formulation	Liquid in PBS containing 50% glycerol, 0.5% BSA and 0.02% sodium azide.
Storage	Store at -20°C. Avoid repeated freeze-thaw cycles.
Protein Name	Taste receptor type 2 member 39
Gene Name	TAS2R39
Cellular localization	Membrane; Multi-pass membrane protein.
Purification	The antibody was affinity-purified from rabbit antiserum by affinity-chromatography using epitope-specific immunogen.
Clonality	Polyclonal
Concentration	1 mg/ml
Observed band	36kD
Human Gene ID	259285
Human Swiss-Prot Number	P59534
Alternative Names	TAS2R39; Taste receptor type 2 member 39; T2R39; Taste receptor type 2 member 57; T2R57
Background	The protein encoded by this gene is a bitter taste receptor that detects green tea catechins, soy isoflavones, and theaflavins. The encoded protein is gustducin-linked and may activate alpha gustducin. This gene is intronless. [provided by RefSeq, Dec

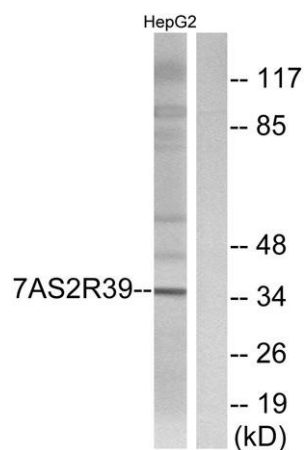
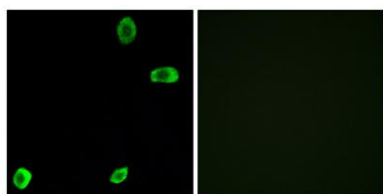


2015],

Western Blot analysis of various cells using T2R39 Polyclonal Antibody



Immunofluorescence analysis of A549 cells, using TAS2R39 Antibody. The picture on the right is blocked with the synthesized peptide.

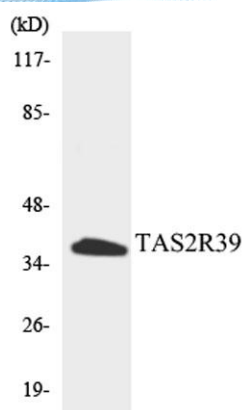


Western blot analysis of lysates from HepG2 cells, using TAS2R39 Antibody. The lane on the right is blocked with the synthesized peptide.





ELK Biotechnology



Western blot analysis of the lysates from HepG2 cells using TAS2R39 antibody.



+86-27-59760950

ELKbio@ELKbiotech.com

www.elkbiotech.com

23-2, No.388 Gaoxin 2nd Road, Wuhan East Lake Hi-tech Development Zone, Hubei, P.R.C.