

# SYT rabbit pAb

Cat No.:ES3544

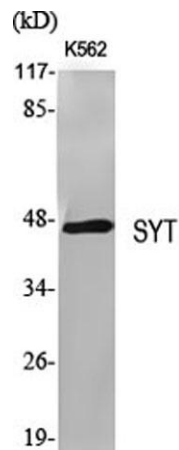
For research use only

## Overview

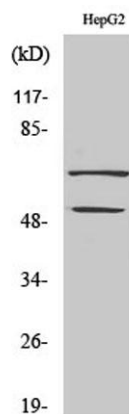
Product Name	SYT rabbit pAb
Host species	Rabbit
Applications	WB;IHC;IF;ELISA
Species Cross-Reactivity	Human;Mouse;Rat
Recommended dilutions	Western Blot: 1/500 - 1/2000. Immunohistochemistry: 1/100 - 1/300. ELISA: 1/20000. Not yet tested in other applications.
Immunogen	The antiserum was produced against synthesized peptide derived from human SSXT. AA range:1-50
Specificity	SYT Polyclonal Antibody detects endogenous levels of SYT protein.
Formulation	Liquid in PBS containing 50% glycerol, 0.5% BSA and 0.02% sodium azide.
Storage	Store at -20°C. Avoid repeated freeze-thaw cycles.
Protein Name	Protein SSXT
Gene Name	SS18
Cellular localization	Nucleus .
Purification	The antibody was affinity-purified from rabbit antiserum by affinity-chromatography using epitope-specific immunogen.
Clonality	Polyclonal
Concentration	1 mg/ml
Observed band	45kD
Human Gene ID	6760
Human Swiss-Prot Number	Q15532
Alternative Names	SS18; SSXT; SYT; Protein SSXT; Protein SYT; Synovial sarcoma translocated to X chromosome protein
Background	disease:A chromosomal aberration involving SS18 may be a cause of synovial sarcoma. Translocation t(X;18)(p11.2;q11.2). The translocation is specifically found in more than 80% of synovial sarcoma. The fusion products SSXT-SSX1 or SSXT-SSX2 are probably responsible for transforming activity.



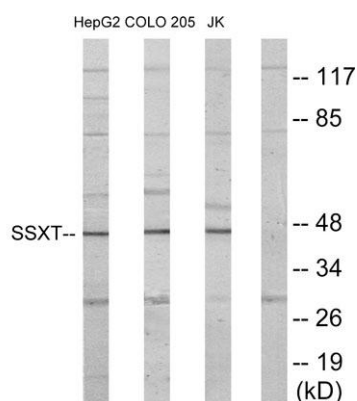
Heterogeneity in the position of the breakpoint can occur (low frequency).,similarity:Belongs to the SS18 family.,tissue specificity:Fairly ubiquitously expressed. Expressed in synovial sarcomas and in other human cell lines. The fusion genes SSXT-SSX1 and SSXT-SSX2 are expressed only in synovial sarcomas.,



Western Blot analysis of various cells using SYT Polyclonal Antibody



Western Blot analysis of COLO205 cells using SYT Polyclonal Antibody

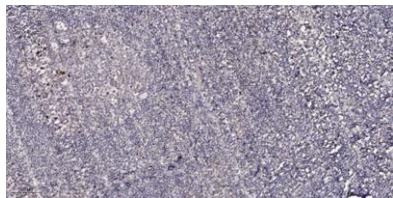


Western blot analysis of lysates from HepG2, Jurkat, and COLO205 cells, using SSXT Antibody. The lane on the right is blocked with the synthesized peptide.





**ELK Biotechnology**



Immunohistochemical analysis of paraffin-embedded human tonsil. 1, Antibody was diluted at 1:200(4° overnight). 2, Tris-EDTA,pH9.0 was used for antigen retrieval. 3,Secondary antibody was diluted at 1:200(room temperature, 45min).



+86-27-59760950

[ELKbio@ELKbiotech.com](mailto:ELKbio@ELKbiotech.com)

[www.elkbiotech.com](http://www.elkbiotech.com)

23-2, No.388 Gaoxin 2nd Road,Wuhan East Lake Hi-tech Development Zone, Hubei , P.R.C