

# Synuclein- $\beta$ rabbit pAb

Cat No.:ES3541

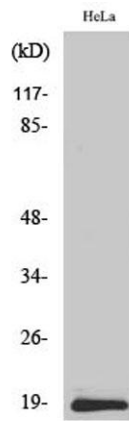
For research use only

## Overview

Product Name	Synuclein- $\beta$ rabbit pAb
Host species	Rabbit
Applications	WB;IHC;IF;ELISA
Species Cross-Reactivity	Human;Mouse;Rat
Recommended dilutions	Western Blot: 1/500 - 1/2000. Immunohistochemistry: 1/100 - 1/300. Immunofluorescence: 1/200 - 1/1000. ELISA: 1/20000. Not yet tested in other applications.
Immunogen	The antiserum was produced against synthesized peptide derived from human Synuclein beta. AA range:85-134
Specificity	Synuclein- $\beta$ Polyclonal Antibody detects endogenous levels of Synuclein- $\beta$ protein.
Formulation	Liquid in PBS containing 50% glycerol, 0.5% BSA and 0.02% sodium azide.
Storage	Store at -20°C. Avoid repeated freeze-thaw cycles.
Protein Name	Beta-synuclein
Gene Name	SNCB
Cellular localization	Cytoplasm.
Purification	The antibody was affinity-purified from rabbit antiserum by affinity-chromatography using epitope-specific immunogen.
Clonality	Polyclonal
Concentration	1 mg/ml
Observed band	14kD
Human Gene ID	6620
Human Swiss-Prot Number	Q16143
Alternative Names	SNCB; Beta-synuclein
Background	This gene encodes a member of a small family of proteins that inhibit phospholipase D2 and may function in neuronal plasticity. The encoded protein is abundant in lesions of patients with Alzheimer disease. A mutation in this gene was found in

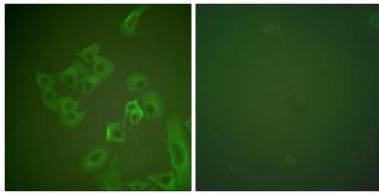


individuals with dementia with Lewy bodies.  
Alternative splicing results in multiple transcript  
variants. [provided by RefSeq, Dec 2015],

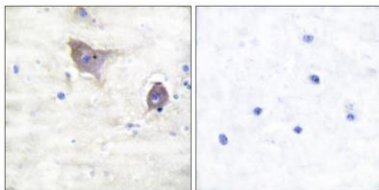


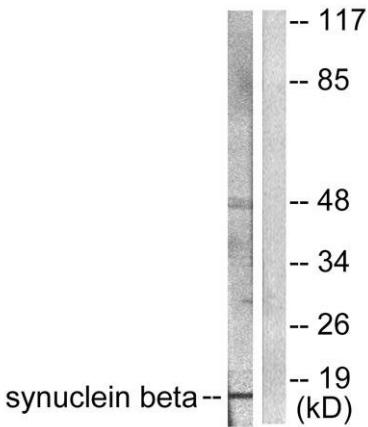
Western Blot analysis of various cells using Synuclein-β  
Polyclonal Antibody

Immunofluorescence analysis of A549 cells, using  
Synuclein beta Antibody. The picture on the right is  
blocked with the synthesized peptide.



Immunohistochemistry analysis of paraffin-embedded  
human brain tissue, using Synuclein beta Antibody. The  
picture on the right is blocked with the synthesized  
peptide.





Western blot analysis of lysates from HeLa cells, using Synuclein beta Antibody. The lane on the right is blocked with the synthesized peptide.

