

Synaptotagmin XIII rabbit pAb

Cat No.:ES3535

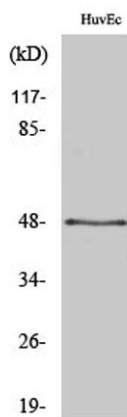
For research use only

Overview

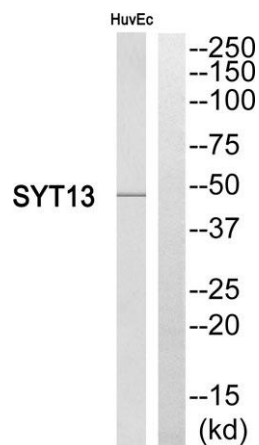
Product Name	Synaptotagmin XIII rabbit pAb
Host species	Rabbit
Applications	WB;ELISA
Species Cross-Reactivity	Human;Mouse;Rat
Recommended dilutions	Western Blot: 1/500 - 1/2000. ELISA: 1/10000. Not yet tested in other applications.
Immunogen	The antiserum was produced against synthesized peptide derived from human SYT13. AA range:321-370
Specificity	Synaptotagmin XIII Polyclonal Antibody detects endogenous levels of Synaptotagmin XIII protein.
Formulation	Liquid in PBS containing 50% glycerol, 0.5% BSA and 0.02% sodium azide.
Storage	Store at -20°C. Avoid repeated freeze-thaw cycles.
Protein Name	Synaptotagmin-13
Gene Name	SYT13
Cellular localization	Membrane ; Single-pass membrane protein .
Purification	The antibody was affinity-purified from rabbit antiserum by affinity-chromatography using epitope-specific immunogen.
Clonality	Polyclonal
Concentration	1 mg/ml
Observed band	48kD
Human Gene ID	57586
Human Swiss-Prot Number	Q7L8C5
Alternative Names	SYT13; KIAA1427; Synaptotagmin-13; Synaptotagmin XIII; SytXIII
Background	synaptotagmin 13(SYT13) Homo sapiens This gene encodes a member of the large synaptotagmin protein family. Family members have an extracellular N-terminal transmembrane domain and a cytoplasmic C terminus with two tandem C2 domains (C2A and C2B). Synaptotogmin family



members can form homo- and heteromeric complexes with each other. They also have different biochemical properties and developmental profiles, and patterns of tissue distribution. Synaptotagmins function as membrane traffickers in multicellular organisms. Two alternatively spliced transcript variants that encode different protein isoforms have been described for this gene. [provided by RefSeq, Oct 2011],



Western Blot analysis of various cells using Synaptotagmin XIII Polyclonal Antibody



Western blot analysis of SYT13 Antibody. The lane on the right is blocked with the SYT13 peptide.

