

Synaptotagmin rabbit pAb

Cat No.:ES3532

For research use only

Overview

Product Name	Synaptotagmin rabbit pAb
Host species	Rabbit
Applications	WB;IHC;IF;ELISA
Species Cross-Reactivity	Human;Mouse;Rat
Recommended dilutions	Western Blot: 1/500 - 1/2000. Immunohistochemistry: 1/100 - 1/300. ELISA: 1/20000. Not yet tested in other applications.
Immunogen	The antiserum was produced against synthesized peptide derived from human Synaptotagmin. AA range:276-325
Specificity	Synaptotagmin Polyclonal Antibody detects endogenous levels of Synaptotagmin protein.
Formulation	Liquid in PBS containing 50% glycerol, 0.5% BSA and 0.02% sodium azide.
Storage	Store at -20°C. Avoid repeated freeze-thaw cycles.
Protein Name	Synaptotagmin-1/2
Gene Name	SYT1/SYT2
Cellular localization	Cytoplasmic vesicle, secretory vesicle membrane ; Single-pass membrane protein . Cytoplasmic vesicle, secretory vesicle, synaptic vesicle membrane ; Single-pass membrane protein . Cytoplasmic vesicle, secretory vesicle, chromaffin granule membrane ; Singl
Purification	The antibody was affinity-purified from rabbit antiserum by affinity-chromatography using epitope-specific immunogen.
Clonality	Polyclonal
Concentration	1 mg/ml
Observed band	50kD
Human Gene ID	6857/127833
Human Swiss-Prot Number	P21579/Q8N9I0
Alternative Names	SYT1; SVP65; SYT; Synaptotagmin-1; Synaptotagmin I; Sytl; p65; SYT2; Synaptotagmin-2; Synaptotagmin

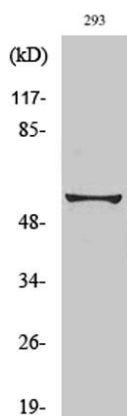




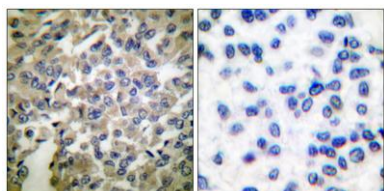
Background

II; SytII

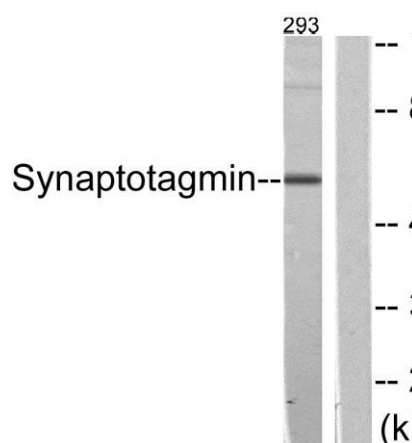
The synaptotagmins are integral membrane proteins of synaptic vesicles thought to serve as Ca^{2+} sensors in the process of vesicular trafficking and exocytosis. Calcium binding to synaptotagmin-1 participates in triggering neurotransmitter release at the synapse (Fernandez-Chacon et al., 2001 [PubMed 11242035]).[supplied by OMIM, Jul 2010],



Western Blot analysis of various cells using Synaptotagmin Polyclonal Antibody diluted at 1:2000



Immunohistochemistry analysis of paraffin-embedded human breast carcinoma tissue, using Synaptotagmin Antibody. The picture on the right is blocked with the synthesized peptide.



Western blot analysis of lysates from 293 cells, treated with Forskolin 40nM 30', using Synaptotagmin Antibody. The lane on the right is blocked with the synthesized peptide.

