

# STK33 rabbit pAb

Cat No.:ES3523

For research use only

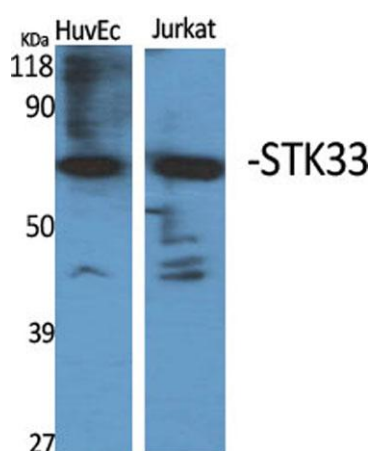
## Overview

Product Name	STK33 rabbit pAb
Host species	Rabbit
Applications	WB;IHC;IF;ELISA
Species Cross-Reactivity	Human;Rat;Mouse;
Recommended dilutions	Western Blot: 1/500 - 1/2000. Immunohistochemistry: 1/100 - 1/300. ELISA: 1/40000. Not yet tested in other applications.
Immunogen	Synthesized peptide derived from the N-terminal region of human STK33.
Specificity	STK33 Polyclonal Antibody detects endogenous levels of STK33 protein.
Formulation	Liquid in PBS containing 50% glycerol, 0.5% BSA and 0.02% sodium azide.
Storage	Store at -20°C. Avoid repeated freeze-thaw cycles.
Protein Name	Serine/threonine-protein kinase 33
Gene Name	STK33
Cellular localization	Cytoplasm, perinuclear region .
Purification	The antibody was affinity-purified from rabbit antiserum by affinity-chromatography using epitope-specific immunogen.
Clonality	Polyclonal
Concentration	1 mg/ml
Observed band	57kD
Human Gene ID	65975
Human Swiss-Prot Number	Q9BYT3
Alternative Names	STK33; Serine/threonine-protein kinase 33
Background	catalytic activity:ATP + a protein = ADP + a phosphoprotein.,similarity:Belongs to the protein kinase superfamily. CAMK Ser/Thr protein kinase family. CaMK subfamily.,similarity:Contains 1 protein kinase domain.,tissue specificity:Highly expressed in testis, fetal lung and heart, followed by pituitary gland, kidney, interventricular septum, pancreas,

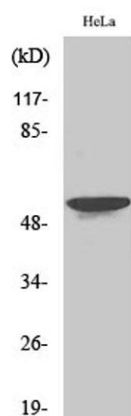




heart, trachea, thyroid gland and uterus. Weak hybridization signals were observed in the following tissues: amygdala, aorta, esophagus, colon ascending, colon transverse, skeletal muscle, spleen, peripheral blood leukocyte, lymph node, bone marrow, placenta, prostate, liver, salivary gland, mammary gland, some tumor cell lines, fetal brain, fetal liver, fetal spleen and fetal thymus. No signal at all was detectable in RNA from tissues of the nervous system.,



Western Blot analysis of various cells using STK33 Polyclonal Antibody

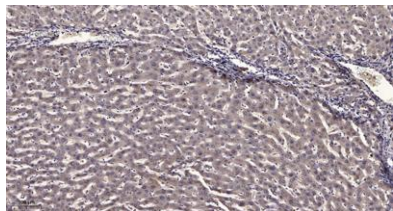


Western Blot analysis of 293 cells using STK33 Polyclonal Antibody





**ELK Biotechnology**



Immunohistochemical analysis of paraffin-embedded human liver cancer. 1, Antibody was diluted at 1:200(4° overnight). 2, Tris-EDTA,pH9.0 was used for antigen retrieval. 3,Secondary antibody was diluted at 1:200(room temperature, 45min).



+86-27-59760950

[ELKbio@ELKbiotech.com](mailto:ELKbio@ELKbiotech.com)

[www.elkbiotech.com](http://www.elkbiotech.com)

23-2, No.388 Gaoxin 2nd Road,Wuhan East Lake Hi-tech Development Zone, Hubei , P.R.C