

Stlp1 rabbit pAb

Cat No.:ES3522

For research use only

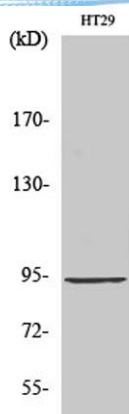
Overview

Product Name	Stlp1 rabbit pAb
Host species	Rabbit
Applications	WB;IHC
Species Cross-Reactivity	Human;Rat;Mouse;
Recommended dilutions	WB 1:500-2000;IHC-p 1:50-300
Immunogen	The antiserum was produced against synthesized peptide derived from human ELP2. AA range:771-820
Specificity	Stlp1 Polyclonal Antibody detects endogenous levels of Stlp1 protein.
Formulation	Liquid in PBS containing 50% glycerol, 0.5% BSA and 0.02% sodium azide.
Storage	Store at -20°C. Avoid repeated freeze-thaw cycles.
Protein Name	Elongator complex protein 2
Gene Name	ELP2
Cellular localization	Cytoplasm . Nucleus .
Purification	The antibody was affinity-purified from rabbit antiserum by affinity-chromatography using epitope-specific immunogen.
Clonality	Polyclonal
Concentration	1 mg/ml
Observed band	93kD
Human Gene ID	55250
Human Swiss-Prot Number	Q6IA86
Alternative Names	ELP2; STATIP1; Elongator complex protein 2; ELP2; SHINC-2; STAT3-interacting protein 1; StIP1
Background	The protein encoded by this gene is a core subunit of the elongator complex, a histone acetyltransferase complex that associates with RNA polymerase II. In addition to histone acetylation, the encoded protein effects transcriptional elongation and may help remodel chromatin. [provided by RefSeq, May 2016],

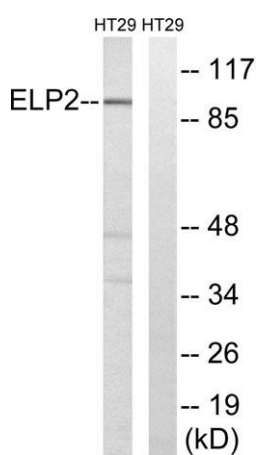




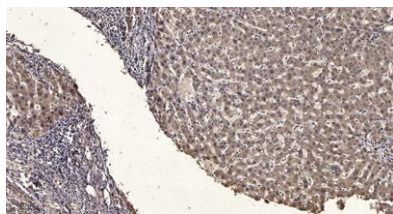
ELK Biotechnology



Western Blot analysis of various cells using Stlp1
Polyclonal Antibody



Western blot analysis of lysates from HT-29 cells, using
ELP2 Antibody. The lane on the right is blocked with the
synthesized peptide.



Immunohistochemical analysis of paraffin-embedded
human liver cancer. 1, Antibody was diluted at 1:200(4°
overnight). 2, Tris-EDTA,pH9.0 was used for antigen
retrieval. 3,Secondary antibody was diluted at 1:200(room
temperature, 45min).



+86-27-59760950

ELKbio@ELKbiotech.com

www.elkbiotech.com

23-2, No.388 Gaoxin 2nd Road,Wuhan East Lake Hi-tech Development Zone, Hubei , P.R.C