

# Stat4 rabbit pAb

Cat No.:ES3513

For research use only

## Overview

Product Name	Stat4 rabbit pAb
Host species	Rabbit
Applications	WB;IHC;IF;IP;ELISA
Species Cross-Reactivity	Human;Mouse;Rat
Recommended dilutions	Western Blot: 1/500 - 1/2000. Immunohistochemistry: 1/100 - 1/300. Immunoprecipitation: 2-5 ug/mg lysate. ELISA: 1/5000. Not yet tested in other applications.
Immunogen	The antiserum was produced against synthesized peptide derived from human STAT4. AA range:660-709
Specificity	Stat4 Polyclonal Antibody detects endogenous levels of Stat4 protein.
Formulation	Liquid in PBS containing 50% glycerol, 0.5% BSA and 0.02% sodium azide.
Storage	Store at -20°C. Avoid repeated freeze-thaw cycles.
Protein Name	Signal transducer and activator of transcription 4
Gene Name	STAT4
Cellular localization	Cytoplasm. Nucleus. Translocated into the nucleus in response to phosphorylation.
Purification	The antibody was affinity-purified from rabbit antiserum by affinity-chromatography using epitope-specific immunogen.
Clonality	Polyclonal
Concentration	1 mg/ml
Observed band	85kD
Human Gene ID	6775
Human Swiss-Prot Number	Q14765
Alternative Names	STAT4; Signal transducer and activator of transcription 4
Background	The protein encoded by this gene is a member of the STAT family of transcription factors. In response to cytokines and growth factors, STAT family

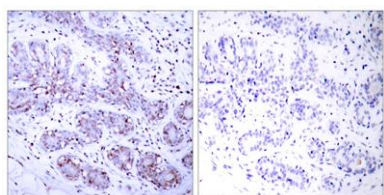




members are phosphorylated by the receptor associated kinases, and then form homo- or heterodimers that translocate to the cell nucleus where they act as transcription activators. This protein is essential for mediating responses to IL12 in lymphocytes, and regulating the differentiation of T helper cells. Mutations in this gene may be associated with systemic lupus erythematosus and rheumatoid arthritis. Alternate splicing results in multiple transcript variants that encode the same protein. [provided by RefSeq, Aug 2011],



Western Blot analysis of various cells using Stat4 Polyclonal Antibody

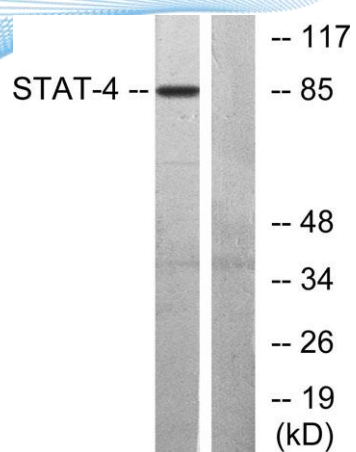


Immunohistochemistry analysis of paraffin-embedded human breast carcinoma tissue, using STAT4 Antibody. The picture on the right is blocked with the synthesized peptide.





**ELK Biotechnology**



Western blot analysis of lysates from HeLa cells, using STAT4 Antibody. The lane on the right is blocked with the synthesized peptide.



+86-27-59760950

ELKbio@ELKbiotech.com

[www.elkbiotech.com](http://www.elkbiotech.com)

23-2, No.388 Gaoxin 2nd Road, Wuhan East Lake Hi-tech Development Zone, Hubei, P.R.C.