



# Stat2 rabbit pAb

Cat No.:ES3510

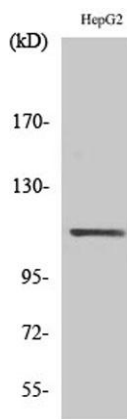
For research use only

## Overview

Product Name	Stat2 rabbit pAb
Host species	Rabbit
Applications	WB;IP;IHC;IF;ELISA
Species Cross-Reactivity	Human;Mouse;Rat
Recommended dilutions	Western Blot: 1/500 - 1/2000. Immunohistochemistry: 1/100 - 1/300. ELISA: 1/5000. Not yet tested in other applications.
Immunogen	The antiserum was produced against synthesized peptide derived from human STAT2. AA range:656-705
Specificity	Stat2 Polyclonal Antibody detects endogenous levels of Stat2 protein.
Formulation	Liquid in PBS containing 50% glycerol, 0.5% BSA and 0.02% sodium azide.
Storage	Store at -20°C. Avoid repeated freeze-thaw cycles.
Protein Name	Signal transducer and activator of transcription 2
Gene Name	STAT2
Cellular localization	Cytoplasm . Nucleus . Translocated into the nucleus upon activation by IFN-alpha/beta. .
Purification	The antibody was affinity-purified from rabbit antiserum by affinity-chromatography using epitope-specific immunogen.
Clonality	Polyclonal
Concentration	1 mg/ml
Observed band	113kD
Human Gene ID	6773
Human Swiss-Prot Number	P52630
Alternative Names	STAT2; Signal transducer and activator of transcription 2; p113
Background	The protein encoded by this gene is a member of the STAT protein family. In response to cytokines and growth factors, STAT family members are phosphorylated by the receptor associated kinases,

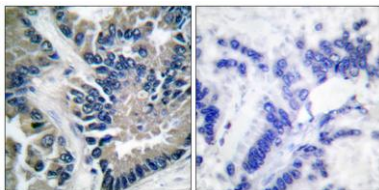


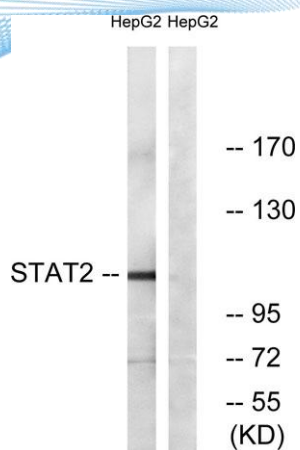
and then form homo- or heterodimers that translocate to the cell nucleus where they act as transcription activators. In response to interferon (IFN), this protein forms a complex with STAT1 and IFN regulatory factor family protein p48 (ISGF3G), in which this protein acts as a transactivator, but lacks the ability to bind DNA directly. Transcription adaptor P300/CBP (EP300/CREBBP) has been shown to interact specifically with this protein, which is thought to be involved in the process of blocking IFN-alpha response by adenovirus. Multiple transcript variants encoding different isoforms have been found for this gene. [provided by RefSeq, Mar 2010],



Western Blot analysis of various cells using Stat2 Polyclonal Antibody

Immunohistochemistry analysis of paraffin-embedded human lung carcinoma tissue, using STAT2 Antibody. The picture on the right is blocked with the synthesized peptide.





Western blot analysis of lysates from HepG2, using STAT2 Antibody. The lane on the right is blocked with the synthesized peptide.

