



SSH3 rabbit pAb

Cat No.:ES3503

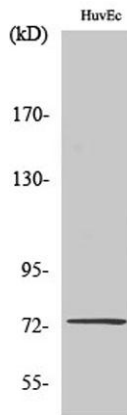
For research use only

Overview

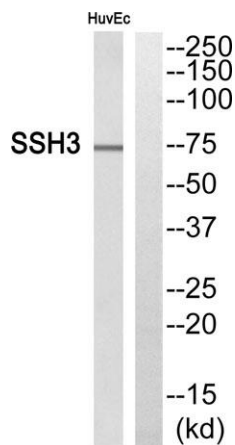
Product Name	SSH3 rabbit pAb
Host species	Rabbit
Applications	WB;IHC;IF;ELISA
Species Cross-Reactivity	Human;Mouse;Rat
Recommended dilutions	Western Blot: 1/500 - 1/2000. Immunohistochemistry: 1/100 - 1/300. ELISA: 1/40000. Not yet tested in other applications.
Immunogen	The antiserum was produced against synthesized peptide derived from human SSH3. AA range:357-406
Specificity	SSH3 Polyclonal Antibody detects endogenous levels of SSH3 protein.
Formulation	Liquid in PBS containing 50% glycerol, 0.5% BSA and 0.02% sodium azide.
Storage	Store at -20°C. Avoid repeated freeze-thaw cycles.
Protein Name	Protein phosphatase Slingshot homolog 3
Gene Name	SSH3
Cellular localization	Cytoplasm, cytoskeleton . Nucleus .
Purification	The antibody was affinity-purified from rabbit antiserum by affinity-chromatography using epitope-specific immunogen.
Clonality	Polyclonal
Concentration	1 mg/ml
Observed band	74kD
Human Gene ID	54961
Human Swiss-Prot Number	Q8TE77
Alternative Names	SSH3; SSH3L; Protein phosphatase Slingshot homolog 3; SSH-like protein 3; SSH-3L; hSSH-3L
Background	The ADF (actin-depolymerizing factor)/cofilin family (see MIM 601442) is composed of stimulus-responsive mediators of actin dynamics. ADF/cofilin proteins are inactivated by kinases such as LIM domain kinase-1 (LIMK1; MIM 601329). The



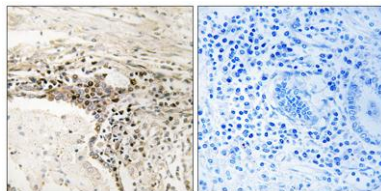
SSH family appears to play a role in actin dynamics by reactivating ADF/cofilin proteins in vivo (Niwa et al., 2002 [PubMed 11832213]).[supplied by OMIM, Mar 2008],



Western Blot analysis of various cells using SSH3 Polyclonal Antibody



Western blot analysis of SSH3 Antibody. The lane on the right is blocked with the SSH3 peptide.

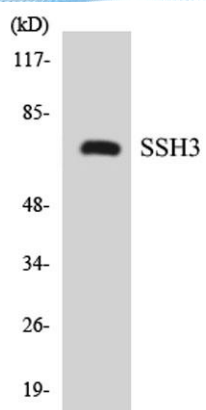


Immunohistochemistry analysis of paraffin-embedded human lung carcinoma, using SSH3 Antibody. The lane on the right is blocked with the SSH3 peptide.





ELK Biotechnology



Western blot analysis of the lysates from K562 cells using SSH3 antibody.



+86-27-59760950

ELKbio@ELKbiotech.com

www.elkbiotech.com

23-2, No.388 Gaoxin 2nd Road,Wuhan East Lake Hi-tech Development Zone, Hubei , P.R.C