

# SSBP1 rabbit pAb

Cat No.:ES3502

For research use only

## Overview

Product Name	SSBP1 rabbit pAb
Host species	Rabbit
Applications	WB;IHC;IF;ELISA
Species Cross-Reactivity	Human;Mouse;Rat;Cow
Recommended dilutions	Western Blot: 1/500 - 1/2000. Immunohistochemistry: 1/100 - 1/300. Immunofluorescence: 1/200 - 1/1000. ELISA: 1/20000. Not yet tested in other applications.
Immunogen	The antiserum was produced against synthesized peptide derived from human MtSSB. AA range:99-148
Specificity	SSBP1 Polyclonal Antibody detects endogenous levels of SSBP1 protein.
Formulation	Liquid in PBS containing 50% glycerol, 0.5% BSA and 0.02% sodium azide.
Storage	Store at -20°C. Avoid repeated freeze-thaw cycles.
Protein Name	Single-stranded DNA-binding protein mitochondrial
Gene Name	SSBP1
Cellular localization	Mitochondrion . Mitochondrion matrix, mitochondrion nucleoid .
Purification	The antibody was affinity-purified from rabbit antiserum by affinity-chromatography using epitope-specific immunogen.
Clonality	Polyclonal
Concentration	1 mg/ml
Observed band	17kD
Human Gene ID	6742
Human Swiss-Prot Number	Q04837
Alternative Names	SSBP1; SSBP; Single-stranded DNA-binding protein; mitochondrial; Mt-SSB; MtSSB; PWP1-interacting protein 17
Background	SSBP1 is a housekeeping gene involved in mitochondrial biogenesis (Tiranti et al., 1995

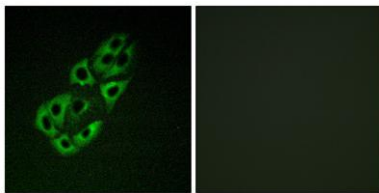


[PubMed 7789991]). It is also a subunit of a single-stranded DNA (ssDNA)-binding complex involved in the maintenance of genome stability (Huang et al., 2009) [PubMed 19683501]. [supplied by OMIM, Feb 2010],

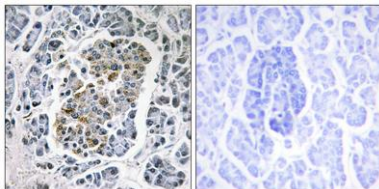


Western Blot analysis of various cells using SSBP1 Polyclonal Antibody

Immunofluorescence analysis of A549 cells, using MtSSB Antibody. The picture on the right is blocked with the synthesized peptide.

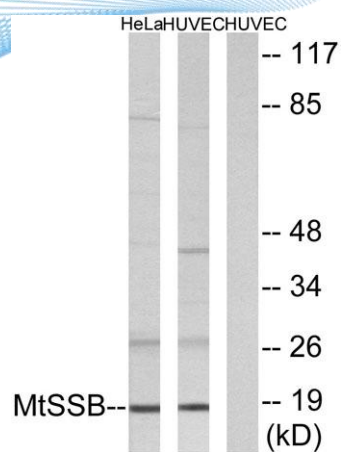


Immunohistochemistry analysis of paraffin-embedded human pancreas tissue, using MtSSB Antibody. The picture on the right is blocked with the synthesized peptide.





**ELK Biotechnology**



Western blot analysis of lysates from HUVEC and HeLa cells, using MtSSB Antibody. The lane on the right is blocked with the synthesized peptide.



+86-27-59760950

ELKbio@ELKbiotech.com

[www.elkbiotech.com](http://www.elkbiotech.com)

23-2, No.388 Gaoxin 2nd Road,Wuhan East Lake Hi-tech Development Zone, Hubei , P.R.C