

SR-1F rabbit pAb

Cat No.:ES3491

For research use only

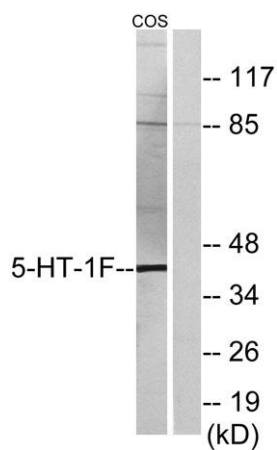
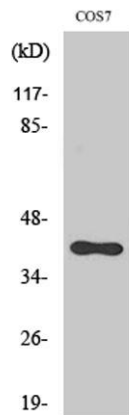
Overview

Product Name	SR-1F rabbit pAb
Host species	Rabbit
Applications	WB;ELISA;IHC
Species Cross-Reactivity	Human;Mouse;Rat;Monkey
Recommended dilutions	WB 1:500-2000;IHC-p 1:50-300; ELISA 2000-20000
Immunogen	The antiserum was produced against synthesized peptide derived from human 5-HT-1F. AA range:101-150
Specificity	SR-1F Polyclonal Antibody detects endogenous levels of SR-1F protein.
Formulation	Liquid in PBS containing 50% glycerol, 0.5% BSA and 0.02% sodium azide.
Storage	Store at -20°C. Avoid repeated freeze-thaw cycles.
Protein Name	5-hydroxytryptamine receptor 1F
Gene Name	HTR1F
Cellular localization	Cell membrane ; Multi-pass membrane protein .
Purification	The antibody was affinity-purified from rabbit antiserum by affinity-chromatography using epitope-specific immunogen.
Clonality	Polyclonal
Concentration	1 mg/ml
Observed band	38kD
Human Gene ID	3355
Human Swiss-Prot Number	P30939
Alternative Names	HTR1F; HTR1EL; 5-hydroxytryptamine receptor 1F; 5-HT-1F; 5-HT1F; Serotonin receptor 1F
Background	function:This is one of the several different receptors for 5-hydroxytryptamine (serotonin), a biogenic hormone that functions as a neurotransmitter, a hormone, and a mitogen. The activity of this receptor is mediated by G proteins that inhibit adenylate cyclase activity.,similarity:Belongs to the G-protein coupled

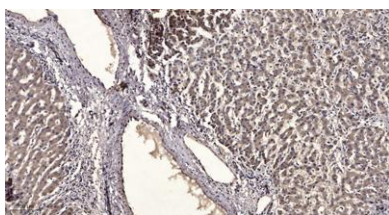


receptor 1 family.,

Western Blot analysis of various cells using SR-1F
Polyclonal Antibody diluted at 1:1000



Western blot analysis of lysates from COS7 cells, using
5-HT-1F Antibody. The lane on the right is blocked with
the synthesized peptide.



Immunohistochemical analysis of paraffin-embedded
human liver cancer. 1, Antibody was diluted at 1:200(4°
overnight). 2, Tris-EDTA,pH9.0 was used for antigen
retrieval. 3,Secondary antibody was diluted at 1:200(room
temperature, 45min).

