

SPT16 rabbit pAb

Cat No.:ES3487

For research use only

Overview

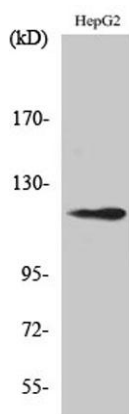
Product Name	SPT16 rabbit pAb
Host species	Rabbit
Applications	WB;IHC;IF;ELISA
Species Cross-Reactivity	Human;Mouse
Recommended dilutions	Western Blot: 1/500 - 1/2000. Immunohistochemistry: 1/100 - 1/300. ELISA: 1/10000. Not yet tested in other applications.
Immunogen	The antiserum was produced against synthesized peptide derived from human SUPT16H. AA range:941-990
Specificity	SPT16 Polyclonal Antibody detects endogenous levels of SPT16 protein.
Formulation	Liquid in PBS containing 50% glycerol, 0.5% BSA and 0.02% sodium azide.
Storage	Store at -20°C. Avoid repeated freeze-thaw cycles.
Protein Name	FACT complex subunit SPT16
Gene Name	SUPT16H
Cellular localization	Nucleus . Chromosome . Colocalizes with RNA polymerase II on chromatin. Recruited to actively transcribed loci.
Purification	The antibody was affinity-purified from rabbit antiserum by affinity-chromatography using epitope-specific immunogen.
Clonality	Polyclonal
Concentration	1 mg/ml
Observed band	119kD
Human Gene ID	11198
Human Swiss-Prot Number	Q9Y5B9
Alternative Names	SUPT16H; FACT140; FACTP140; FACT complex subunit SPT16; Chromatin-specific transcription elongation factor 140 kDa subunit; FACT 140 kDa subunit; FACTp140; Facilitates chromatin transcription complex subunit SPT16; hSPT16



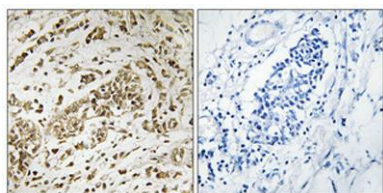


Background

Transcription of protein-coding genes can be reconstituted on naked DNA with only the general transcription factors and RNA polymerase II. However, this minimal system cannot transcribe DNA packaged into chromatin, indicating that accessory factors may facilitate access to DNA. One such factor, FACT (facilitates chromatin transcription), interacts specifically with histones H2A/H2B to effect nucleosome disassembly and transcription elongation. FACT is composed of an 80 kDa subunit and a 140 kDa subunit; this gene encodes the 140 kDa subunit. [provided by RefSeq, Feb 2009],



Western Blot analysis of various cells using SPT16 Polyclonal Antibody cells nucleus extracted by Minute TM Cytoplasmic and Nuclear Fractionation kit (SC-003, Invent biotech, MN, USA).

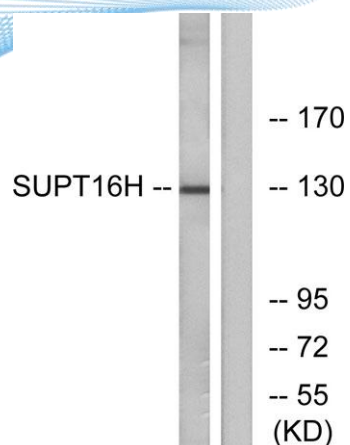


Immunohistochemical analysis of paraffin-embedded Human breast cancer. Antibody was diluted at 1:100 (4° overnight). High-pressure and temperature Tris-EDTA, pH 8.0 was used for antigen retrieval. Negative control (right) obtained from antibody was pre-absorbed.





ELK Biotechnology



Western blot analysis of lysates from HepG2 and Jurkat cells, using SUPT16H Antibody. The lane on the right is blocked with the synthesized peptide.



+86-27-59760950

ELKbio@ELKbiotech.com

www.elkbiotech.com

23-2, No.388 Gaoxin 2nd Road,Wuhan East Lake Hi-tech Development Zone, Hubei , P.R.C