



SMIF rabbit pAb

Cat No.:ES3467

For research use only

Overview

Product Name	SMIF rabbit pAb
Host species	Rabbit
Applications	WB;IHC;IF;ELISA
Species Cross-Reactivity	Human;Mouse
Recommended dilutions	Western Blot: 1/500 - 1/2000. Immunohistochemistry: 1/100 - 1/300. ELISA: 1/20000. Not yet tested in other applications.
Immunogen	The antiserum was produced against synthesized peptide derived from human DCP1A. AA range:111-160
Specificity	SMIF Polyclonal Antibody detects endogenous levels of SMIF protein.
Formulation	Liquid in PBS containing 50% glycerol, 0.5% BSA and 0.02% sodium azide.
Storage	Store at -20°C. Avoid repeated freeze-thaw cycles.
Protein Name	mRNA-decapping enzyme 1A
Gene Name	DCP1A
Cellular localization	Cytoplasm, P-body . Nucleus . Co-localizes with NANOS3 in the processing bodies (By similarity). Predominantly cytoplasmic, in processing bodies (PB) (PubMed:16364915). Nuclear, after TGFB1 treatment. Translocation to the nucleus depends on interaction wi
Purification	The antibody was affinity-purified from rabbit antiserum by affinity-chromatography using epitope-specific immunogen.
Clonality	Polyclonal
Concentration	1 mg/ml
Observed band	75kD
Human Gene ID	55802
Human Swiss-Prot Number	Q9NPI6
Alternative Names	DCP1A; SMIF; mRNA-decapping enzyme 1A; Smad4-interacting transcriptional co-activator;

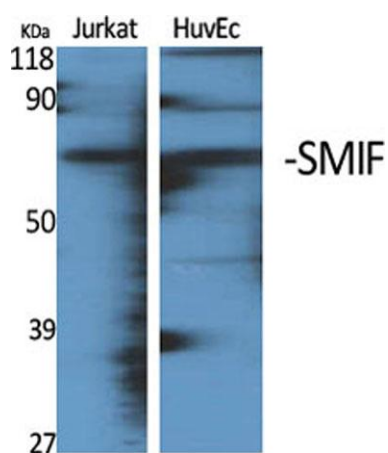




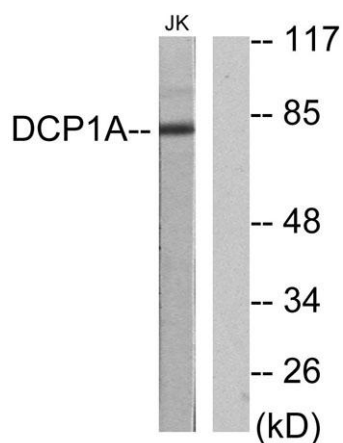
Background

Transcription factor SMIF

Decapping is a key step in general and regulated mRNA decay. The protein encoded by this gene is a decapping enzyme. This protein and another decapping enzyme form a decapping complex, which interacts with the nonsense-mediated decay factor hUpf1 and may be recruited to mRNAs containing premature termination codons. This protein also participates in the TGF-beta signaling pathway. Alternative splicing of this gene results in multiple transcript variants. [provided by RefSeq, Feb 2014],



Western Blot analysis of various cells using SMIF Polyclonal Antibody

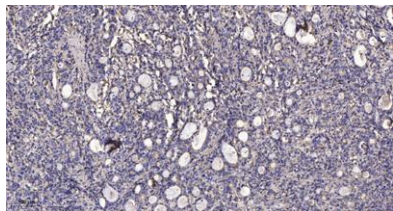


Western blot analysis of lysates from Jurkat cells, using DCP1A Antibody. The lane on the right is blocked with the synthesized peptide.





ELK Biotechnology



Immunohistochemical analysis of paraffin-embedded human Gastric adenocarcinoma. 1, Antibody was diluted at 1:200(4° overnight). 2, Tris-EDTA,pH9.0 was used for antigen retrieval. 3,Secondary antibody was diluted at 1:200(room temperature, 45min).



+86-27-59760950

ELKbio@ELKbiotech.com

www.elkbiotech.com

23-2, No.388 Gaoxin 2nd Road,Wuhan East Lake Hi-tech Development Zone, Hubei , P.R.C