

# SLC6A8 rabbit pAb

Cat No.:ES3453

For research use only

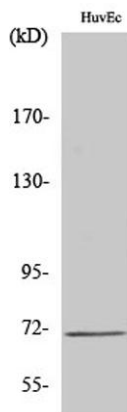
## Overview

Product Name	SLC6A8 rabbit pAb
Host species	Rabbit
Applications	WB;IHC
Species Cross-Reactivity	Human;Mouse;Rat
Recommended dilutions	WB 1:500-2000;IHC-p 1:50-300
Immunogen	The antiserum was produced against synthesized peptide derived from human SLC6A8. AA range:581-630
Specificity	SLC6A8 Polyclonal Antibody detects endogenous levels of SLC6A8 protein.
Formulation	Liquid in PBS containing 50% glycerol, 0.5% BSA and 0.02% sodium azide.
Storage	Store at -20°C. Avoid repeated freeze-thaw cycles.
Protein Name	Sodium- and chloride-dependent creatine transporter 1
Gene Name	SLC6A8
Cellular localization	Membrane; Multi-pass membrane protein.
Purification	The antibody was affinity-purified from rabbit antiserum by affinity-chromatography using epitope-specific immunogen.
Clonality	Polyclonal
Concentration	1 mg/ml
Observed band	70kD
Human Gene ID	6535
Human Swiss-Prot Number	P48029
Alternative Names	SLC6A8; Sodium- and chloride-dependent creatine transporter 1; CT1; Creatine transporter 1; Solute carrier family 6 member 8
Background	The protein encoded by this gene is a plasma membrane protein whose function is to transport creatine into and out of cells. Defects in this gene can result in X-linked creatine deficiency syndrome. Multiple transcript variants encoding different

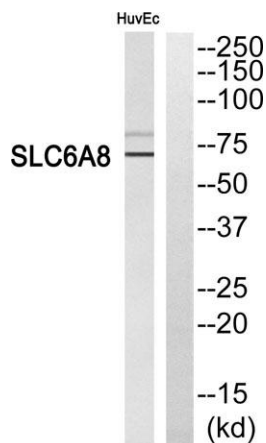


isoforms have been found for this gene. [provided by RefSeq, Dec 2008],

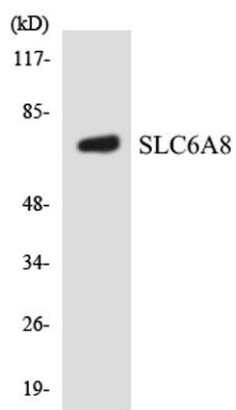
Western Blot analysis of various cells using SLC6A8 Polyclonal Antibody



Western blot analysis of SLC6A8 Antibody. The lane on the right is blocked with the SLC6A8 peptide.

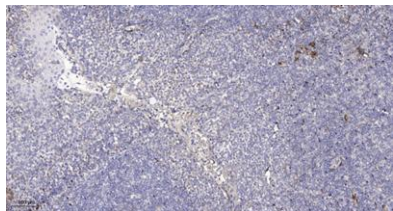


Western blot analysis of the lysates from HUVECcells using SLC6A8 antibody.





**ELK Biotechnology**



Immunohistochemical analysis of paraffin-embedded human tonsil. 1, Antibody was diluted at 1:200(4° overnight). 2, Tris-EDTA,pH9.0 was used for antigen retrieval. 3,Secondary antibody was diluted at 1:200(room temperature, 45min).



+86-27-59760950

ELKbio@ELKbiotech.com

[www.elkbiotech.com](http://www.elkbiotech.com)

23-2, No.388 Gaoxin 2nd Road,Wuhan East Lake Hi-tech Development Zone, Hubei , P.R.C