

SLC17A2 rabbit pAb

Cat No.:ES3451

For research use only

Overview

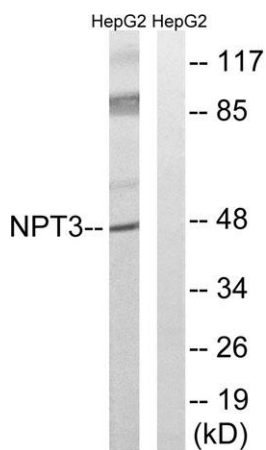
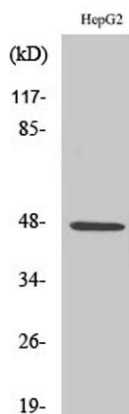
Product Name	SLC17A2 rabbit pAb
Host species	Rabbit
Applications	WB;ELISA;IHC
Species Cross-Reactivity	Human;Mouse
Recommended dilutions	WB 1:500-2000;IHC-p 1:50-300; ELISA 2000-20000
Immunogen	The antiserum was produced against synthesized peptide derived from human SLC17A2. AA range:213-262
Specificity	SLC17A2 Polyclonal Antibody detects endogenous levels of SLC17A2 protein.
Formulation	Liquid in PBS containing 50% glycerol, 0.5% BSA and 0.02% sodium azide.
Storage	Store at -20°C. Avoid repeated freeze-thaw cycles.
Protein Name	Sodium-dependent phosphate transport protein 3
Gene Name	SLC17A2
Cellular localization	Membrane; Multi-pass membrane protein.
Purification	The antibody was affinity-purified from rabbit antiserum by affinity-chromatography using epitope-specific immunogen.
Clonality	Polyclonal
Concentration	1 mg/ml
Observed band	47kD
Human Gene ID	10246
Human Swiss-Prot Number	O00624
Alternative Names	SLC17A2; NPT3; Sodium-dependent phosphate transport protein 3; Na(+)/PI cotransporter 3; Sodium/phosphate cotransporter 3; Solute carrier family 17 member 2
Background	function:May be involved in actively transporting phosphate into cells via Na(+) cotransport.,similarity:Belongs to the major facilitator superfamily. Sodium/anion cotransporter family.,tissue specificity:Expressed in the small



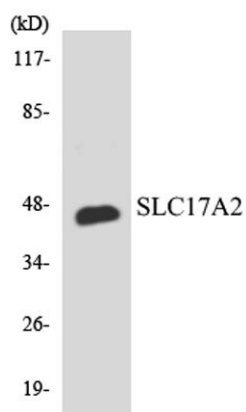


intestine, kidney, spleen and testis. Not detected in fetal brain, bone marrow, and mammary gland.,

Western Blot analysis of various cells using SLC17A2 Polyclonal Antibody



Western blot analysis of lysates from HepG2 cells, using SLC17A2 Antibody. The lane on the right is blocked with the synthesized peptide.

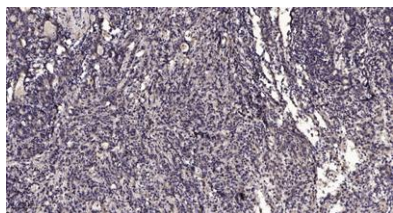


Western blot analysis of the lysates from RAW264.7 cells using SLC17A2 antibody.





ELK Biotechnology



Immunohistochemical analysis of paraffin-embedded human Gastric adenocarcinoma. 1, Antibody was diluted at 1:200(4° overnight). 2, Tris-EDTA,pH9.0 was used for antigen retrieval. 3,Secondary antibody was diluted at 1:200(room temperature, 45min).



+86-27-59760950

ELKbio@ELKbiotech.com

www.elkbiotech.com

23-2, No.388 Gaoxin 2nd Road,Wuhan East Lake Hi-tech Development Zone, Hubei , P.R.C