



Six3/6 rabbit pAb

Cat No.:ES3448

For research use only

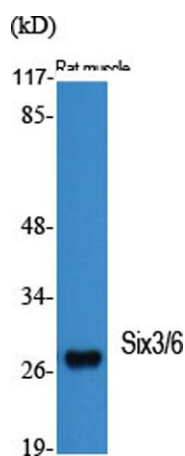
Overview

Product Name	Six3/6 rabbit pAb
Host species	Rabbit
Applications	WB;ELISA;IHC
Species Cross-Reactivity	Human;Mouse;Rat
Recommended dilutions	WB 1:500-2000;IHC-p 1:50-300; ELISA 2000-20000
Immunogen	The antiserum was produced against synthesized peptide derived from human SIX6. AA range:121-170
Specificity	Six3/6 Polyclonal Antibody detects endogenous levels of Six3/6 protein.
Formulation	Liquid in PBS containing 50% glycerol, 0.5% BSA and 0.02% sodium azide.
Storage	Store at -20°C. Avoid repeated freeze-thaw cycles.
Protein Name	Homeobox protein SIX6
Gene Name	SIX6
Cellular localization	Nucleus .
Purification	The antibody was affinity-purified from rabbit antiserum by affinity-chromatography using epitope-specific immunogen.
Clonality	Polyclonal
Concentration	1 mg/ml
Observed band	28kD
Human Gene ID	4990
Human Swiss-Prot Number	O95475
Alternative Names	SIX6; OPTX2; SIX9; Homeobox protein SIX6; Homeodomain protein OPTX2; Optic homeobox 2; Sine oculis homeobox homolog 6
Background	The protein encoded by this gene is a homeobox protein that is similar to the Drosophila 'sine oculis' gene product. This gene is found in a cluster of related genes on chromosome 14 and is thought to be involved in eye development. Defects in this gene are a cause of isolated microphthalmia with cataract





type 2 (MCOPCT2). [provided by RefSeq, Jul 2008],

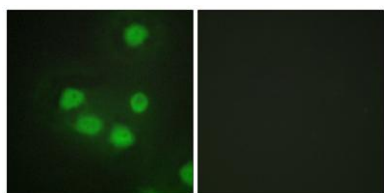


Western Blot analysis of various cells using Six3/6 Polyclonal Antibody cells nucleus extracted by Minute TM Cytoplasmic and Nuclear Fractionation kit (SC-003, Inventbiotech, MN, USA).



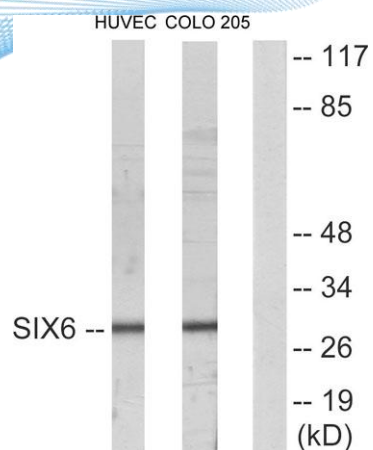
Western Blot analysis of COLO205 cells using Six3/6 Polyclonal Antibody cells nucleus extracted by Minute TM Cytoplasmic and Nuclear Fractionation kit (SC-003, Inventbiotech, MN, USA).

Immunofluorescence analysis of HepG2 cells, using SIX6 Antibody. The picture on the right is blocked with the synthesized peptide.





ELK Biotechnology



Western blot analysis of lysates from HUVEC and COLO205 cells, using SIX6 Antibody. The lane on the right is blocked with the synthesized peptide.



+86-27-59760950

ELKbio@ELKbiotech.com

www.elkbiotech.com

23-2, No.388 Gaoxin 2nd Road,Wuhan East Lake Hi-tech Development Zone, Hubei , P.R.C