



# SH2D5 rabbit pAb

Cat No.:ES3435

For research use only

## Overview

Product Name	SH2D5 rabbit pAb
Host species	Rabbit
Applications	WB;ELISA;IHC
Species Cross-Reactivity	Human;Mouse;Rat
Recommended dilutions	WB 1:500-2000;IHC-p 1:50-300; ELISA 2000-20000
Immunogen	The antiserum was produced against synthesized peptide derived from human SH2D5. AA range:281-330
Specificity	SH2D5 Polyclonal Antibody detects endogenous levels of SH2D5 protein.
Formulation	Liquid in PBS containing 50% glycerol, 0.5% BSA and 0.02% sodium azide.
Storage	Store at -20°C. Avoid repeated freeze-thaw cycles.
Protein Name	SH2 domain-containing protein 5
Gene Name	SH2D5
Cellular localization	Cell junction, synapse, postsynaptic density .
Purification	The antibody was affinity-purified from rabbit antiserum by affinity-chromatography using epitope-specific immunogen.
Clonality	Polyclonal
Concentration	1 mg/ml
Observed band	35kD
Human Gene ID	400745
Human Swiss-Prot Number	Q6ZV89
Alternative Names	SH2D5; SH2 domain-containing protein 5
Background	similarity:Contains 1 SH2 domain.,

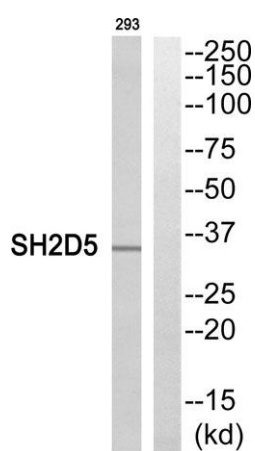




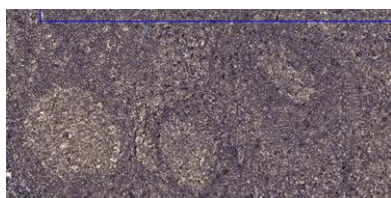
**ELK Biotechnology**



Western Blot analysis of various cells using SH2D5 Polyclonal Antibody



Western blot analysis of SH2D5 Antibody. The lane on the right is blocked with the SH2D5 peptide.



Immunohistochemical analysis of paraffin-embedded human tonsil. 1, Antibody was diluted at 1:200(4° overnight). 2, Tris-EDTA,pH9.0 was used for antigen retrieval. 3,Secondary antibody was diluted at 1:200(room temperature, 45min).



+86-27-59760950

[ELKbio@ELKbiotech.com](mailto:ELKbio@ELKbiotech.com)

[www.elkbiotech.com](http://www.elkbiotech.com)

23-2, No.388 Gaoxin 2nd Road,Wuhan East Lake Hi-tech Development Zone, Hubei , P.R.C