

Septin 8 rabbit pAb

Cat No.:ES3427

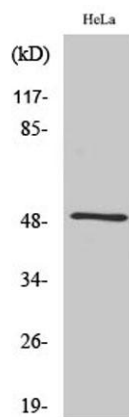
For research use only

Overview

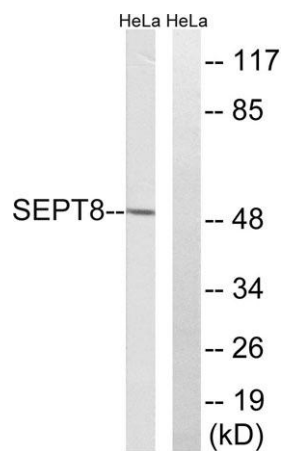
Product Name	Septin 8 rabbit pAb
Host species	Rabbit
Applications	WB;ELISA;IHC
Species Cross-Reactivity	Human;Mouse;Rat
Recommended dilutions	WB 1:500-2000;IHC-p 1:50-300; ELISA 2000-20000
Immunogen	The antiserum was produced against synthesized peptide derived from human SEPT8. AA range:170-219
Specificity	Septin 8 Polyclonal Antibody detects endogenous levels of Septin 8 protein.
Formulation	Liquid in PBS containing 50% glycerol, 0.5% BSA and 0.02% sodium azide.
Storage	Store at -20°C. Avoid repeated freeze-thaw cycles.
Protein Name	Septin-8
Gene Name	SEPT8
Cellular localization	Cytoplasm . Cytoplasm, cytoskeleton . Cell junction, synapse . Cell projection, axon . Cytoplasmic vesicle, secretory vesicle, synaptic vesicle membrane . Cell junction, synapse, presynapse . Expressed in axons of immature neurons, localizes to synapses i
Purification	The antibody was affinity-purified from rabbit antiserum by affinity-chromatography using epitope-specific immunogen.
Clonality	Polyclonal
Concentration	1 mg/ml
Observed band	50kD
Human Gene ID	23176
Human Swiss-Prot Number	Q92599
Alternative Names	SEPT8; KIAA0202; Septin-8
Background	septin 8(SEPT8) Homo sapiens This gene is a member of the septin family of nucleotide binding proteins, originally described in yeast as cell division cycle regulatory proteins. Septins are highly



conserved in yeast, Drosophila, and mouse, and appear to regulate cytoskeletal organization. Disruption of septin function disturbs cytokinesis and results in large multinucleate or polyploid cells. Multiple alternatively spliced transcript variants encoding different isoforms have been found for this gene. [provided by RefSeq, Jul 2014],



Western Blot analysis of various cells using Septin 8 Polyclonal Antibody diluted at 1:2000



Western blot analysis of lysates from HeLa cells, using SEPT8 Antibody. The lane on the right is blocked with the synthesized peptide.



Immunohistochemical analysis of paraffin-embedded human tonsil. 1, Antibody was diluted at 1:200(4° overnight). 2, Tris-EDTA,pH9.0 was used for antigen retrieval. 3,Secondary antibody was diluted at 1:200(room temperature, 45min).

