

Sarcoglycan- β rabbit pAb

Cat No.:ES3408

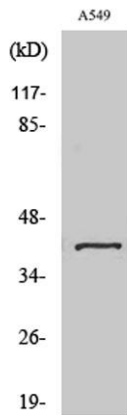
For research use only

Overview

Product Name	Sarcoglycan- β rabbit pAb
Host species	Rabbit
Applications	WB;IHC;IF;ELISA
Species Cross-Reactivity	Human;Mouse
Recommended dilutions	Western Blot: 1/500 - 1/2000. Immunohistochemistry: 1/100 - 1/300. ELISA: 1/40000. Not yet tested in other applications.
Immunogen	The antiserum was produced against synthesized peptide derived from human Sarcoglycan-beta. AA range:87-136
Specificity	Sarcoglycan- β Polyclonal Antibody detects endogenous levels of Sarcoglycan- β protein.
Formulation	Liquid in PBS containing 50% glycerol, 0.5% BSA and 0.02% sodium azide.
Storage	Store at -20°C. Avoid repeated freeze-thaw cycles.
Protein Name	Beta-sarcoglycan
Gene Name	SGCB
Cellular localization	Cell membrane, sarcolemma ; Single-pass type II membrane protein . Cytoplasm, cytoskeleton .
Purification	The antibody was affinity-purified from rabbit antiserum by affinity-chromatography using epitope-specific immunogen.
Clonality	Polyclonal
Concentration	1 mg/ml
Observed band	43kD
Human Gene ID	6443
Human Swiss-Prot Number	Q16585
Alternative Names	SGCB; Beta-sarcoglycan; Beta-SG; 43 kDa dystrophin-associated glycoprotein; 43DAG; A3b
Background	This gene encodes a member of the sarcoglycan family. Sarcoglycans are transmembrane components in the dystrophin-glycoprotein complex which help stabilize the muscle fiber membranes

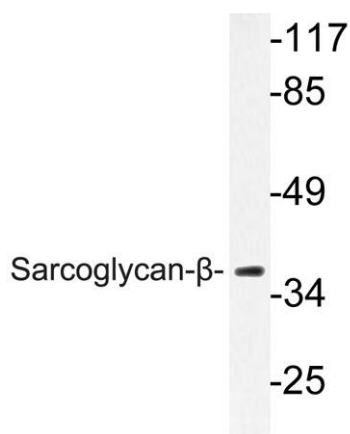
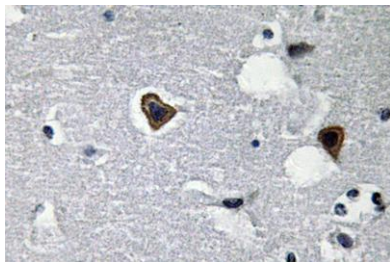


and link the muscle cytoskeleton to the extracellular matrix. Mutations in this gene have been associated with limb-girdle muscular dystrophy.[provided by RefSeq, Oct 2008],



Western Blot analysis of various cells using Sarcoglycan- β Polyclonal Antibody

Immunohistochemistry analysis of Sarcoglycan- β antibody in paraffin-embedded human brain tissue.



Western blot analysis of lysate from A549 cells, using Sarcoglycan- β antibody.

