

Rsk-4 rabbit pAb

Cat No.:ES3398

For research use only

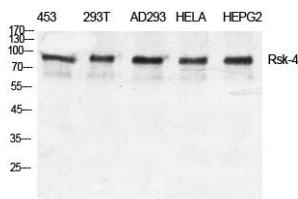
Overview

Product Name	Rsk-4 rabbit pAb
Host species	Rabbit
Applications	WB;IHC;IF;ELISA
Species Cross-Reactivity	Human;Rat;Mouse;
Recommended dilutions	Western Blot: 1/500 - 1/2000. Immunohistochemistry: 1/100 - 1/300. ELISA: 1/10000. Not yet tested in other applications.
Immunogen	The antiserum was produced against synthesized peptide derived from human S6K-alpha6. AA range:661-710
Specificity	Rsk-4 Polyclonal Antibody detects endogenous levels of Rsk-4 protein.
Formulation	Liquid in PBS containing 50% glycerol, 0.5% BSA and 0.02% sodium azide.
Storage	Store at -20°C. Avoid repeated freeze-thaw cycles.
Protein Name	Ribosomal protein S6 kinase alpha-6
Gene Name	RPS6KA6
Cellular localization	Cytoplasm, cytosol . Nucleus . Predominantly cytosolic.
Purification	The antibody was affinity-purified from rabbit antiserum by affinity-chromatography using epitope-specific immunogen.
Clonality	Polyclonal
Concentration	1 mg/ml
Observed band	84kD
Human Gene ID	27330
Human Swiss-Prot Number	Q9UK32
Alternative Names	RPS6KA6; RSK4; Ribosomal protein S6 kinase alpha-6; S6K-alpha-6; 90 kDa ribosomal protein S6 kinase 6; p90-RSK 6; p90RSK6; Ribosomal S6 kinase 4; RSK-4; pp90RSK4
Background	ribosomal protein S6 kinase A6(RPS6KA6) Homo sapiens This gene encodes a member of

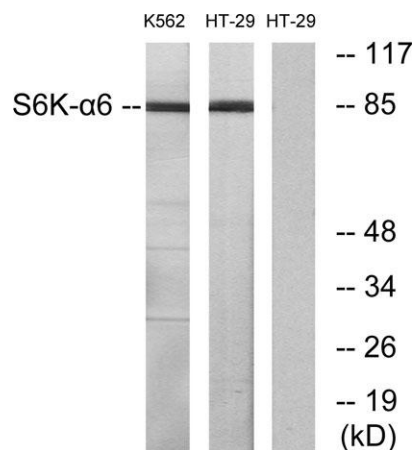
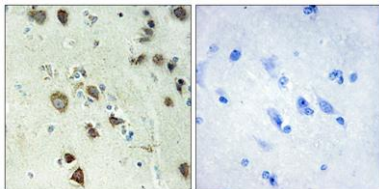


ribosomal S6 kinase family, serine-threonine protein kinases which are regulated by growth factors. The encoded protein may be distinct from other members of this family, however, as studies suggest it is not growth factor dependent and may not participate in the same signaling pathways. [provided by RefSeq, Jan 2010],

Western Blot analysis of various cells using Rsk-4
Polyclonal Antibody diluted at 1:500



Immunohistochemistry analysis of paraffin-embedded human brain tissue, using S6K-alpha6 Antibody. The picture on the right is blocked with the synthesized peptide.



Western blot analysis of lysates from K562 and HT-29 cells, using S6K-alpha6 Antibody. The lane on the right is blocked with the synthesized peptide.

