

Rit1 rabbit pAb

Cat No.:ES3383

For research use only

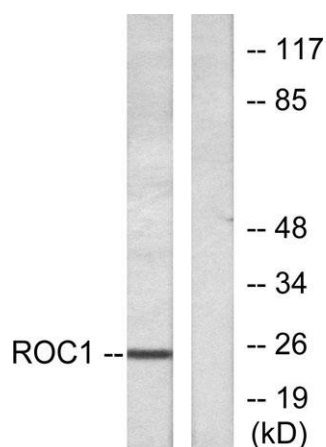
Overview

Product Name	Rit1 rabbit pAb
Host species	Rabbit
Applications	WB;ELISA;IHC
Species Cross-Reactivity	Human;Mouse
Recommended dilutions	WB 1:500-2000;IHC-p 1:50-300; ELISA 2000-20000
Immunogen	The antiserum was produced against synthesized peptide derived from human RIT1. AA range:170-219
Specificity	Rit1 Polyclonal Antibody detects endogenous levels of Rit1 protein.
Formulation	Liquid in PBS containing 50% glycerol, 0.5% BSA and 0.02% sodium azide.
Storage	Store at -20°C. Avoid repeated freeze-thaw cycles.
Protein Name	GTP-binding protein Rit1
Gene Name	RIT1
Cellular localization	Cell membrane.
Purification	The antibody was affinity-purified from rabbit antiserum by affinity-chromatography using epitope-specific immunogen.
Clonality	Polyclonal
Concentration	1 mg/ml
Observed band	25kD
Human Gene ID	6016
Human Swiss-Prot Number	Q92963
Alternative Names	RIT1; RIBB; RIT; ROC1; GTP-binding protein Rit1; Ras-like protein expressed in many tissues; Ras-like without CAAX protein 1
Background	This gene encodes a member of a subfamily of Ras-related GTPases. The encoded protein is involved in regulating p38 MAPK-dependent signaling cascades related to cellular stress. This protein also cooperates with nerve growth factor to promote neuronal development and regeneration.

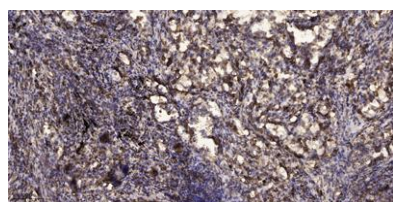


Alternate splicing results in multiple transcript variants. [provided by RefSeq, Feb 2012],

Western Blot analysis of various cells using Rit1 Polyclonal Antibody diluted at 1:500



Western blot analysis of lysates from Jurkat cells, using RIT1 Antibody. The lane on the right is blocked with the synthesized peptide.



Immunohistochemical analysis of paraffin-embedded human Squamous cell carcinoma of lung. 1, Antibody was diluted at 1:200(4° overnight). 2, Tris-EDTA,pH9.0 was used for antigen retrieval. 3,Secondary antibody was diluted at 1:200(room temperature, 45min).

