

Ribosomal Protein S4Y1 rabbit pAb

Cat No.:ES3375

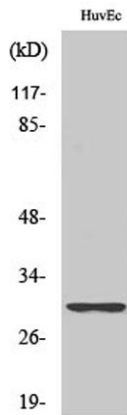
For research use only

Overview

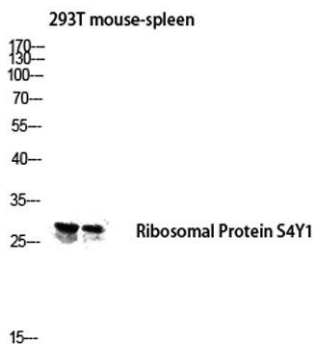
Product Name	Ribosomal Protein S4Y1 rabbit pAb
Host species	Rabbit
Applications	WB;IHC;IF;ELISA
Species	Human;Rat;Mouse;
Cross-Reactivity	
Recommended dilutions	Western Blot: 1/500 - 1/2000. Immunohistochemistry: 1/100 - 1/300. Immunofluorescence: 1/200 - 1/1000. ELISA: 1/20000. Not yet tested in other applications.
Immunogen	The antiserum was produced against synthesized peptide derived from human RPS4Y1. AA range:214-263
Specificity	Ribosomal Protein S4Y1 Polyclonal Antibody detects endogenous levels of Ribosomal Protein S4Y1 protein.
Formulation	Liquid in PBS containing 50% glycerol, 0.5% BSA and 0.02% sodium azide.
Storage	Store at -20°C. Avoid repeated freeze-thaw cycles.
Protein Name	40S ribosomal protein S4 Y isoform 1
Gene Name	RPS4Y1
Cellular localization	nucleus,nucleoplasm,cytosol,ribosome,polysome,membrane,cytoplasmic small ribosomal subunit,
Purification	The antibody was affinity-purified from rabbit antiserum by affinity-chromatography using epitope-specific immunogen.
Clonality	Polyclonal
Concentration	1 mg/ml
Observed band	29kD
Human Gene ID	6192
Human Swiss-Prot Number	P22090
Alternative Names	RPS4Y1; RPS4Y; 40S ribosomal protein S4; Y isoform 1
Background	Cytoplasmic ribosomes, organelles that catalyze protein synthesis,



consist of a small 40S subunit and a large 60S subunit. Together these subunits are composed of 4 RNA species and approximately 80 structurally distinct proteins. This gene encodes ribosomal protein S4, a component of the 40S subunit. Ribosomal protein S4 is the only ribosomal protein known to be encoded by more than one gene, namely this gene and ribosomal protein S4, X-linked (RPS4X). The 2 isoforms encoded by these genes are not identical, but are functionally equivalent. Ribosomal protein S4 belongs to the S4E family of ribosomal proteins. It has been suggested that haploinsufficiency of the ribosomal protein S4 genes plays a role in Turner syndrome; however, this hypothesis is controversial. As is typical for genes encoding ribosomal proteins, there are multiple processed pseudogenes of this gene dispersed through

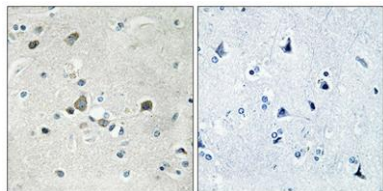


Western Blot analysis of various cells using Ribosomal Protein S4Y1 Polyclonal Antibody diluted at 1:1000

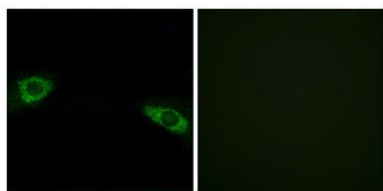


Western blot analysis of 293T mouse-spleen lysis using Ribosomal Protein S4Y1 antibody. Antibody was diluted at 1:1000





Immunohistochemical analysis of paraffin-embedded Human brain. Antibody was diluted at 1:100(4° overnight). High-pressure and temperature Tris-EDTA,pH8.0 was used for antigen retrieval. Negative contrl (right) obtained from antibody was pre-absorbed by i



Immunofluorescence analysis of HUVEC cells, using RPS4Y1 Antibody. The picture on the right is blocked with the synthesized peptide.

