

Ribosomal Protein S27L rabbit pAb

Cat No.:ES3372

For research use only

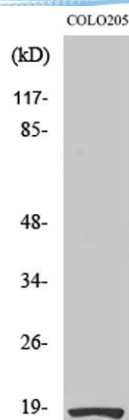
Overview

| | |
|--------------------------|---|
| Product Name | Ribosomal Protein S27L rabbit pAb |
| Host species | Rabbit |
| Applications | WB;IHC;IF;ELISA |
| Species Cross-Reactivity | Human;Mouse |
| Recommended dilutions | Western Blot: 1/500 - 1/2000. Immunohistochemistry: 1/100 - 1/300. ELISA: 1/10000. Not yet tested in other applications. |
| Immunogen | The antiserum was produced against synthesized peptide derived from human RPS27L. AA range:1-50 |
| Specificity | Ribosomal Protein S27L Polyclonal Antibody detects endogenous levels of Ribosomal Protein S27L protein. |
| Formulation | Liquid in PBS containing 50% glycerol, 0.5% BSA and 0.02% sodium azide. |
| Storage | Store at -20°C. Avoid repeated freeze-thaw cycles. |
| Protein Name | 40S ribosomal protein S27-like |
| Gene Name | RPS27L |
| Cellular localization | nucleus,nucleoplasm,ribosome,cytosolic small ribosomal subunit, |
| Purification | The antibody was affinity-purified from rabbit antiserum by affinity-chromatography using epitope-specific immunogen. |
| Clonality | Polyclonal |
| Concentration | 1 mg/ml |
| Observed band | 18kD |
| Human Gene ID | 51065 |
| Human Swiss-Prot Number | Q71UM5 |
| Alternative Names | RPS27L; 40S ribosomal protein S27-like |
| Background | This gene encodes a protein sharing 96% amino acid similarity with ribosomal protein S27, which suggests the encoded protein may be a component of the 40S ribosomal subunit. [provided by RefSeq, Jul 2008], |

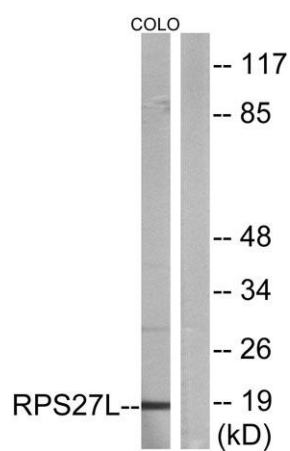




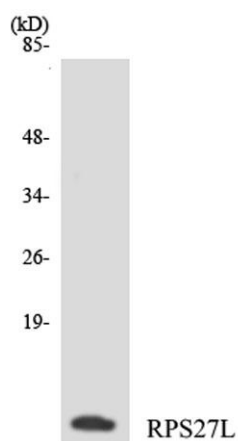
ELK Biotechnology



Western Blot analysis of various cells using Ribosomal Protein S27L Polyclonal Antibody



Western blot analysis of lysates from COLO cells, using RPS27L Antibody. The lane on the right is blocked with the synthesized peptide.



Western blot analysis of the lysates from COLO205 cells using RPS27L antibody.



+86-27-59760950

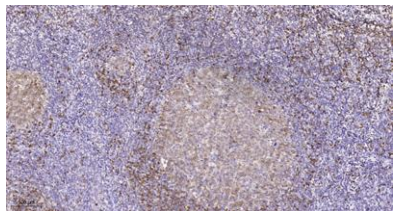
ELKbio@ELKbiotech.com

www.elkbiotech.com

23-2, No.388 Gaoxin 2nd Road,Wuhan East Lake Hi-tech Development Zone, Hubei , P.R.C



ELK Biotechnology



Immunohistochemical analysis of paraffin-embedded human tonsil. 1, Tris-EDTA, pH 9.0 was used for antigen retrieval. 2 Antibody was diluted at 1:200 (4°C overnight). 3, Secondary antibody was diluted at 1:200 (room temperature, 45 min).



+86-27-59760950

ELKbio@ELKbiotech.com

www.elkbiotech.com

23-2, No.388 Gaoxin 2nd Road, Wuhan East Lake Hi-tech Development Zone, Hubei, P.R.C.