

Ribosomal Protein L39 rabbit pAb

Cat No.:ES3368

For research use only

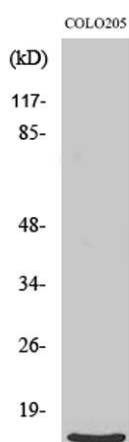
Overview

Product Name	Ribosomal Protein L39 rabbit pAb
Host species	Rabbit
Applications	WB;IHC;IF;ELISA
Species Cross-Reactivity	Human;Mouse;Rat
Recommended dilutions	Western Blot: 1/500 - 1/2000. Immunohistochemistry: 1/100 - 1/300. Immunofluorescence: 1/200 - 1/1000. ELISA: 1/40000. Not yet tested in other applications.
Immunogen	The antiserum was produced against synthesized peptide derived from human RPL39. AA range:1-50
Specificity	Ribosomal Protein L39 Polyclonal Antibody detects endogenous levels of Ribosomal Protein L39 protein.
Formulation	Liquid in PBS containing 50% glycerol, 0.5% BSA and 0.02% sodium azide.
Storage	Store at -20°C. Avoid repeated freeze-thaw cycles.
Protein Name	60S ribosomal protein L39
Gene Name	RPL39
Cellular localization	extracellular space,cytosol,cytosolic large ribosomal subunit,
Purification	The antibody was affinity-purified from rabbit antiserum by affinity-chromatography using epitope-specific immunogen.
Clonality	Polyclonal
Concentration	1 mg/ml
Observed band	6kD
Human Gene ID	6170
Human Swiss-Prot Number	P62891
Alternative Names	RPL39; 60S ribosomal protein L39
Background	Ribosomes, the organelles that catalyze protein synthesis, consist of a small 40S subunit and a large 60S subunit. Together these subunits are composed of 4 RNA species and approximately 80 structurally distinct proteins. This gene encodes a ribosomal

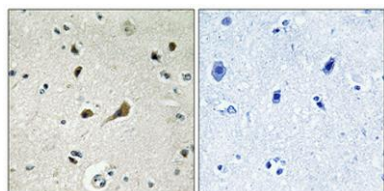




protein that is a component of the 60S subunit. The protein belongs to the S39E family of ribosomal proteins. It is located in the cytoplasm. In rat, the protein is the smallest, and one of the most basic, proteins of the ribosome. This gene is co-transcribed with the U69 small nucleolar RNA gene, which is located in its second intron. As is typical for genes encoding ribosomal proteins, there are multiple processed pseudogenes of this gene dispersed through the genome. [provided by RefSeq, Jul 2008],



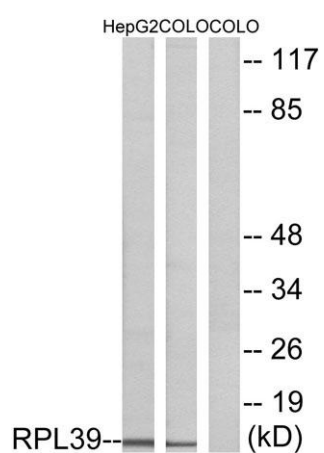
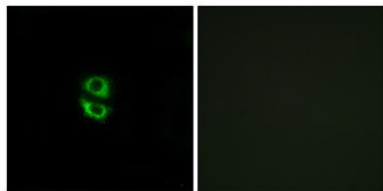
Western Blot analysis of various cells using Ribosomal Protein L39 Polyclonal Antibody



Immunohistochemical analysis of paraffin-embedded Human brain. Antibody was diluted at 1:100(4° overnight). High-pressure and temperature Tris-EDTA,pH8.0 was used for antigen retrieval. Negative contrl (right) obtained from antibody was pre-absorbed by immunogen peptide.



Immunofluorescence analysis of A549 cells, using RPL39 Antibody. The picture on the right is blocked with the synthesized peptide.



Western blot analysis of lysates from COLO and HepG2 cells, using RPL39 Antibody. The lane on the right is blocked with the synthesized peptide.

