

# Ribosomal Protein L28 rabbit pAb

Cat No.:ES3362

For research use only

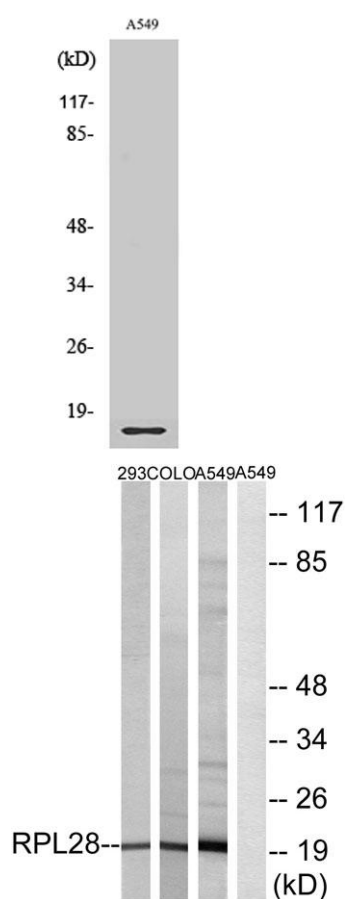
## Overview

Product Name	Ribosomal Protein L28 rabbit pAb
Host species	Rabbit
Applications	WB;IHC;IF;ELISA
Species Cross-Reactivity	Human;Mouse;Rat
Recommended dilutions	Western Blot: 1/500 - 1/2000. Immunohistochemistry: 1/100 - 1/300. ELISA: 1/20000. Not yet tested in other applications.
Immunogen	The antiserum was produced against synthesized peptide derived from human RPL28. AA range:41-90
Specificity	Ribosomal Protein L28 Polyclonal Antibody detects endogenous levels of Ribosomal Protein L28 protein.
Formulation	Liquid in PBS containing 50% glycerol, 0.5% BSA and 0.02% sodium azide.
Storage	Store at -20°C. Avoid repeated freeze-thaw cycles.
Protein Name	60S ribosomal protein L28
Gene Name	RPL28
Cellular localization	cytoplasm,cytosol,ribosome,membrane,cytosolic large ribosomal subunit,dendrite,cytoplasmic ribonucleoprotein granule,cell body,extracellular exosome,
Purification	The antibody was affinity-purified from rabbit antiserum by affinity-chromatography using epitope-specific immunogen.
Clonality	Polyclonal
Concentration	1 mg/ml
Observed band	20kD
Human Gene ID	6158
Human Swiss-Prot Number	P46779
Alternative Names	RPL28; 60S ribosomal protein L28
Background	Ribosomes, the organelles that catalyze protein synthesis, consist of a small 40S subunit and a large 60S subunit. Together these subunits are composed of 4 RNA species and approximately 80 structurally





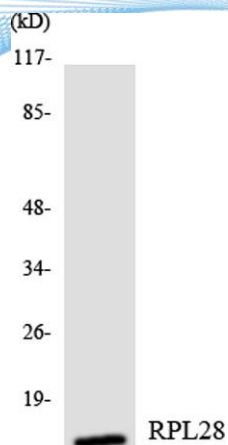
distinct proteins. This gene encodes a ribosomal protein that is a component of the 60S subunit. The protein belongs to the L28E family of ribosomal proteins. It is located in the cytoplasm. Variable expression of this gene in colorectal cancers compared to adjacent normal tissues has been observed, although no correlation between the level of expression and the severity of the disease has been found. As is typical for genes encoding ribosomal proteins, there are multiple processed pseudogenes of this gene dispersed through the genome. Alternative splicing results in multiple transcript variants encoding distinct isoforms.[provided by RefSeq, Oct 2008],



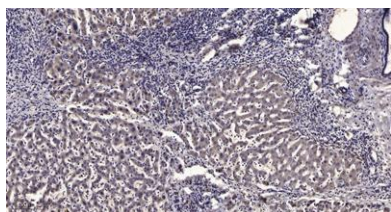
Western Blot analysis of various cells using Ribosomal Protein L28 Polyclonal Antibody diluted at 1:2000

Western blot analysis of lysates from A549, 293, and COLO cells, using RPL28 Antibody. The lane on the right is blocked with the synthesized peptide.





Western blot analysis of the lysates from HeLa cells using RPL28 antibody.



Immunohistochemical analysis of paraffin-embedded human liver cancer. 1, Antibody was diluted at 1:200(4° overnight). 2, Tris-EDTA,pH9.0 was used for antigen retrieval. 3,Secondary antibody was diluted at 1:200(room temperature, 45min).

