



Ribosomal Protein L10L rabbit pAb

Cat No.:ES3356

For research use only

Overview

Product Name	Ribosomal Protein L10L rabbit pAb
Host species	Rabbit
Applications	WB;IHC;IF;ELISA
Species Cross-Reactivity	Human;Monkey
Recommended dilutions	Western Blot: 1/500 - 1/2000. Immunohistochemistry: 1/100 - 1/300. ELISA: 1/10000. Not yet tested in other applications.
Immunogen	The antiserum was produced against synthesized peptide derived from human RPL10L. AA range:151-200
Specificity	Ribosomal Protein L10L Polyclonal Antibody detects endogenous levels of Ribosomal Protein L10L protein.
Formulation	Liquid in PBS containing 50% glycerol, 0.5% BSA and 0.02% sodium azide.
Storage	Store at -20°C. Avoid repeated freeze-thaw cycles.
Protein Name	60S ribosomal protein L10-like
Gene Name	RPL10L
Cellular localization	Cytoplasm .
Purification	The antibody was affinity-purified from rabbit antiserum by affinity-chromatography using epitope-specific immunogen.
Clonality	Polyclonal
Concentration	1 mg/ml
Observed band	20kD
Human Gene ID	140801
Human Swiss-Prot Number	Q96L21
Alternative Names	RPL10L; 60S ribosomal protein L10-like
Background	This gene encodes a protein sharing sequence similarity with ribosomal protein L10. It is not currently known whether the encoded protein is a functional ribosomal protein or whether it has evolved a function that is independent of the



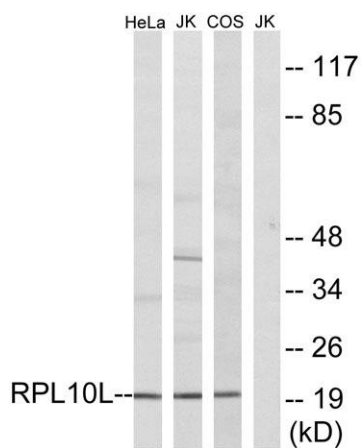


ribosome. This gene is intronless. [provided by RefSeq, Jul 2008],

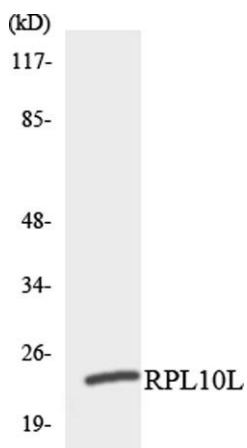
Western Blot analysis of various cells using Ribosomal Protein L10L Polyclonal Antibody diluted at 1:1000



Western blot analysis of lysates from Jurkat, COS7, and HeLa cells, using RPL10L Antibody. The lane on the right is blocked with the synthesized peptide.

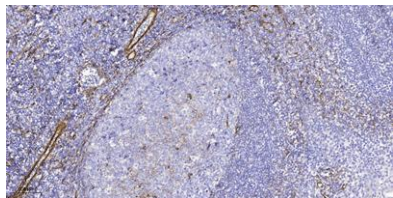


Western blot analysis of the lysates from HUVEC cells using RPL10L antibody.





ELK Biotechnology



Immunohistochemical analysis of paraffin-embedded human tonsil. 1, Tris-EDTA, pH 9.0 was used for antigen retrieval. 2 Antibody was diluted at 1:200 (4° overnight). 3, Secondary antibody was diluted at 1:200 (room temperature, 45 min).



+86-27-59760950

ELKbio@ELKbiotech.com

www.elkbiotech.com

23-2, No.388 Gaoxin 2nd Road, Wuhan East Lake Hi-tech Development Zone, Hubei, P.R.C