

RhoGEF p115 rabbit pAb

Cat No.:ES3355

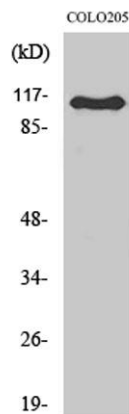
For research use only

Overview

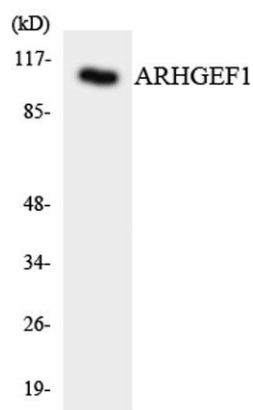
Product Name	RhoGEF p115 rabbit pAb
Host species	Rabbit
Applications	WB;ELISA;IHC
Species Cross-Reactivity	Human;Mouse;Rat
Recommended dilutions	WB 1:500-2000;IHC-p 1:50-300; ELISA 2000-20000
Immunogen	The antiserum was produced against synthesized peptide derived from human ARHGEF1. AA range:162-211
Specificity	RhoGEF p115 Polyclonal Antibody detects endogenous levels of RhoGEF p115 protein.
Formulation	Liquid in PBS containing 50% glycerol, 0.5% BSA and 0.02% sodium azide.
Storage	Store at -20°C. Avoid repeated freeze-thaw cycles.
Protein Name	Rho guanine nucleotide exchange factor 1
Gene Name	ARHGEF1
Cellular localization	Cytoplasm . Membrane . Translocated to the membrane by activated GNA13 or LPA stimulation.
Purification	The antibody was affinity-purified from rabbit antiserum by affinity-chromatography using epitope-specific immunogen.
Clonality	Polyclonal
Concentration	1 mg/ml
Observed band	105kD
Human Gene ID	9138
Human Swiss-Prot Number	Q92888
Alternative Names	ARHGEF1; Rho guanine nucleotide exchange factor 1; 115 kDa guanine nucleotide exchange factor; p115-RhoGEF; p115RhoGEF; Sub1.5
Background	Rho GTPases play a fundamental role in numerous cellular processes that are initiated by extracellular stimuli that work through G protein coupled receptors. The encoded protein may form complex with G proteins and stimulate Rho-dependent



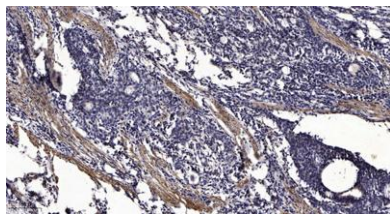
signals. Multiple alternatively spliced transcript variants have been found for this gene, but the full-length nature of some variants has not been defined. [provided by RefSeq, Jul 2008],



Western Blot analysis of various cells using RhoGEF p115 Polyclonal Antibody



Western blot analysis of the lysates from HepG2 cells using ARHGEF1 antibody.



Immunohistochemical analysis of paraffin-embedded human Gastric adenocarcinoma. 1, Antibody was diluted at 1:200(4° overnight). 2, Tris-EDTA,pH9.0 was used for antigen retrieval. 3,Secondary antibody was diluted at 1:200(room temperature, 45min).

