

Rhodopsin rabbit pAb

Cat No.:ES3354

For research use only

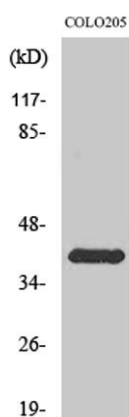
Overview

Product Name	Rhodopsin rabbit pAb
Host species	Rabbit
Applications	WB;IHC;IF;ELISA
Species Cross-Reactivity	Human;Mouse;Rat
Recommended dilutions	Western Blot: 1/500 - 1/2000. Immunohistochemistry: 1/100 - 1/300. ELISA: 1/5000. Not yet tested in other applications.
Immunogen	The antiserum was produced against synthesized peptide derived from human Rhodopsin. AA range:299-348
Specificity	Rhodopsin Polyclonal Antibody detects endogenous levels of Rhodopsin protein.
Formulation	Liquid in PBS containing 50% glycerol, 0.5% BSA and 0.02% sodium azide.
Storage	Store at -20°C. Avoid repeated freeze-thaw cycles.
Protein Name	Rhodopsin
Gene Name	RHO
Cellular localization	Membrane ; Multi-pass membrane protein . Cell projection, cilium, photoreceptor outer segment . Synthesized in the inner segment (IS) of rod photoreceptor cells before vectorial transport to disk membranes in the rod outer segment (OS) photosensory cilia.
Purification	The antibody was affinity-purified from rabbit antiserum by affinity-chromatography using epitope-specific immunogen.
Clonality	Polyclonal
Concentration	1 mg/ml
Observed band	42kD
Human Gene ID	6010
Human Swiss-Prot Number	P08100
Alternative Names	RHO; OPN2; Rhodopsin; Opsin-2
Background	Retinitis pigmentosa is an inherited progressive



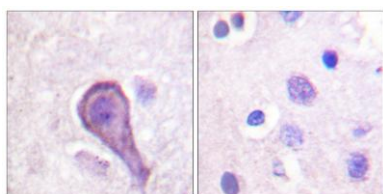


disease which is a major cause of blindness in western communities. It can be inherited as an autosomal dominant, autosomal recessive, or X-linked recessive disorder. In the autosomal dominant form, which comprises about 25% of total cases, approximately 30% of families have mutations in the gene encoding the rod photoreceptor-specific protein rhodopsin. This is the transmembrane protein which, when photoexcited, initiates the visual transduction cascade. Defects in this gene are also one of the causes of congenital stationary night blindness. [provided by RefSeq, Jul 2008],



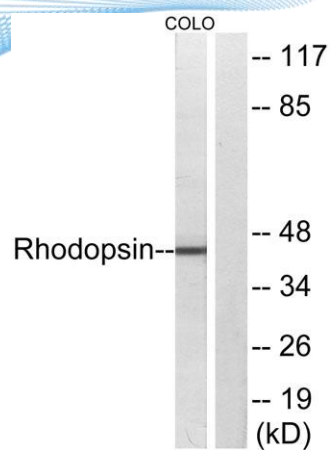
Western Blot analysis of various cells using Rhodopsin Polyclonal Antibody

Immunohistochemistry analysis of paraffin-embedded human brain tissue, using Rhodopsin Antibody. The picture on the right is blocked with the synthesized peptide.





ELK Biotechnology



Western blot analysis of lysates from COLO cells, using Rhodopsin Antibody. The lane on the right is blocked with the synthesized peptide.



+86-27-59760950

ELKbio@ELKbiotech.com

www.elkbiotech.com

23-2, No.388 Gaoxin 2nd Road, Wuhan East Lake Hi-tech Development Zone, Hubei, P.R.C.