



RGAG1 rabbit pAb

Cat No.:ES3346

For research use only

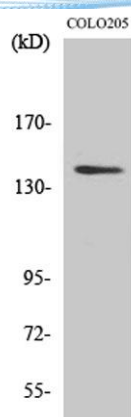
Overview

Product Name	RGAG1 rabbit pAb
Host species	Rabbit
Applications	WB;ELISA
Species Cross-Reactivity	Human;Mouse
Recommended dilutions	Western Blot: 1/500 - 1/2000. ELISA: 1/40000. Not yet tested in other applications.
Immunogen	The antiserum was produced against synthesized peptide derived from human RGAG1. AA range:1331-1380
Specificity	RGAG1 Polyclonal Antibody detects endogenous levels of RGAG1 protein.
Formulation	Liquid in PBS containing 50% glycerol, 0.5% BSA and 0.02% sodium azide.
Storage	Store at -20°C. Avoid repeated freeze-thaw cycles.
Protein Name	Retrotransposon gag domain-containing protein 1
Gene Name	RGAG1
Cellular localization	
Purification	The antibody was affinity-purified from rabbit antiserum by affinity-chromatography using epitope-specific immunogen.
Clonality	Polyclonal
Concentration	1 mg/ml
Observed band	144kD
Human Gene ID	57529
Human Swiss-Prot Number	Q8NET4
Alternative Names	RGAG1; KIAA1318; Retrotransposon gag domain-containing protein 1; Tumor antigen BJ-HCC-23
Background	RGAG1 (Retrotransposon Gag Domain Containing 1) is a Protein Coding gene. Diseases associated with RGAG1 include non-syndromic x-linked intellectual disability.

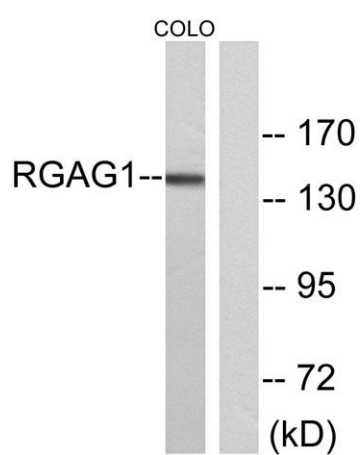




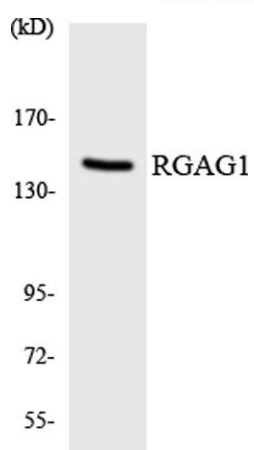
ELK Biotechnology



Western Blot analysis of various cells using RGAG1
Polyclonal Antibody



Western blot analysis of lysates from COLO cells, using
RGAG1 Antibody. The lane on the right is blocked with the
synthesized peptide.



Western blot analysis of the lysates from HT-29 cells using
RGAG1 antibody.



+86-27-59760950

ELKbio@ELKbiotech.com

www.elkbiotech.com

23-2, No.388 Gaoxin 2nd Road, Wuhan East Lake Hi-tech Development Zone, Hubei, P.R.C.