

RBAK rabbit pAb

Cat No.:ES3334

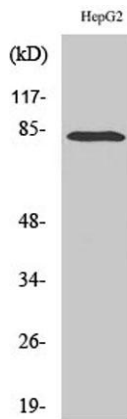
For research use only

Overview

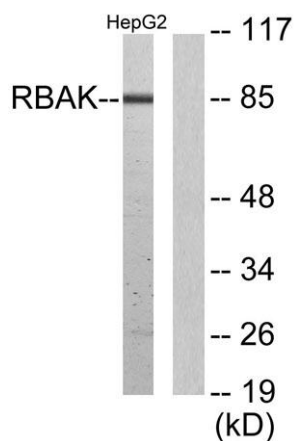
Product Name	RBAK rabbit pAb
Host species	Rabbit
Applications	WB;IF;ELISA;IHC
Species Cross-Reactivity	Human;Mouse
Recommended dilutions	WB 1:500-2000; IF/ICC 1:50-200;ELISA 1:2000-20000;IHC-p 1:50-200
Immunogen	The antiserum was produced against synthesized peptide derived from human RBAK. AA range:1-50
Specificity	RBAK Polyclonal Antibody detects endogenous levels of RBAK protein.
Formulation	Liquid in PBS containing 50% glycerol, 0.5% BSA and 0.02% sodium azide.
Storage	Store at -20°C. Avoid repeated freeze-thaw cycles.
Protein Name	RB-associated KRAB zinc finger protein
Gene Name	RBAK
Cellular localization	Nucleus .
Purification	The antibody was affinity-purified from rabbit antiserum by affinity-chromatography using epitope-specific immunogen.
Clonality	Polyclonal
Concentration	1 mg/ml
Observed band	85kD
Human Gene ID	57786
Human Swiss-Prot Number	Q9NYW8
Alternative Names	RBAK; ZNF769; RB-associated KRAB zinc finger protein; RB-associated KRAB repressor; hRBaK; Zinc finger protein 769
Background	This gene encodes a nuclear protein which interacts with the tumor suppressor retinoblastoma 1. The two interacting proteins are thought to act as a transcriptional repressor for promoters which are activated by the E2F1 transcription factor. This protein contains a Kruppel-associated box (KRAB),



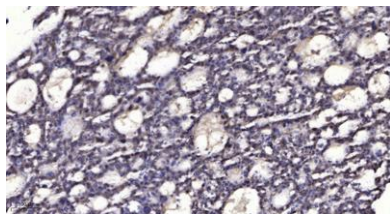
which is a transcriptional repressor motif.
Read-through transcripts that include exons from the downstream gene LOC389458 are expressed from this locus. [provided by RefSeq, Mar 2011],



Western Blot analysis of various cells using RBAK Polyclonal Antibody cells nucleus extracted by Minute TM Cytoplasmic and Nuclear Fractionation kit (SC-003, Inventbiotech, MN, USA).



Western blot analysis of lysates from HepG2 cells, using RBAK Antibody. The lane on the right is blocked with the synthesized peptide.



Immunohistochemical analysis of paraffin-embedded human liver cancer. 1, Antibody was diluted at 1:200(4° overnight). 2, Tris-EDTA, pH9.0 was used for antigen retrieval. 3, Secondary antibody was diluted at 1:200(room temperature, 45min).

