

# Rag C rabbit pAb

Cat No.:ES3319

For research use only

## Overview

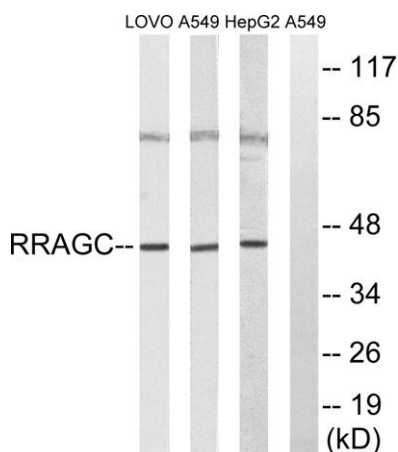
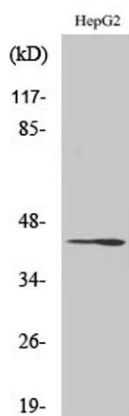
Product Name	Rag C rabbit pAb
Host species	Rabbit
Applications	WB;ELISA;IHC CoIP
Species Cross-Reactivity	Human;Mouse;Rat
Recommended dilutions	WB 1:500-2000;IHC-p 1:50-300; IP 1:50-200 ELISA 2000-20000
Immunogen	The antiserum was produced against synthesized peptide derived from human RRAGC. AA range:302-351
Specificity	Rag C Polyclonal Antibody detects endogenous levels of Rag C protein.
Formulation	Liquid in PBS containing 50% glycerol, 0.5% BSA and 0.02% sodium azide.
Storage	Store at -20°C. Avoid repeated freeze-thaw cycles.
Protein Name	Ras-related GTP-binding protein C
Gene Name	RRAGC
Cellular localization	Cytoplasm . Nucleus . Lysosome . Predominantly cytoplasmic. May shuttle between the cytoplasm and nucleus, depending on the bound nucleotide state of associated RRAGA (PubMed:11073942) .
Purification	The antibody was affinity-purified from rabbit antiserum by affinity-chromatography using epitope-specific immunogen.
Clonality	Polyclonal
Concentration	1 mg/ml
Observed band	44kD
Human Gene ID	64121
Human Swiss-Prot Number	Q9HB90
Alternative Names	RRAGC; Ras-related GTP-binding protein C; Rag C; RagC; GTPase-interacting protein 2; TIB929
Background	This gene encodes a member of the GTR/RAG GTP-binding protein family. The encoded protein is a monomeric guanine nucleotide-binding protein



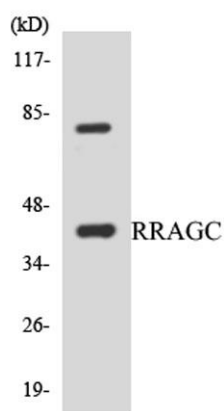


which forms a heterodimer with RRAGA and RRAGB and is primarily localized to the cytoplasm. The encoded protein promotes intracellular localization of the mTOR complex. Alternative splicing results in multiple transcript variants. [provided by RefSeq, Dec 2012],

Western Blot analysis of various cells using Rag C Polyclonal Antibody



Western blot analysis of lysates from HepG2, A549, and LOVO cells, using RRAGC Antibody. The lane on the right is blocked with the synthesized peptide.

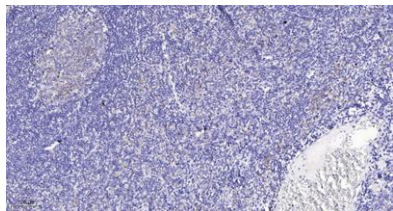


Western blot analysis of the lysates from HepG2 cells using RRAGC antibody.





**ELK Biotechnology**



Immunohistochemical analysis of paraffin-embedded human tonsil. 1, Antibody was diluted at 1:200(4° overnight). 2, Tris-EDTA,pH9.0 was used for antigen retrieval. 3,Secondary antibody was diluted at 1:200(room temperature, 45min).



+86-27-59760950

[ELKbio@ELKbiotech.com](mailto:ELKbio@ELKbiotech.com)

[www.elkbiotech.com](http://www.elkbiotech.com)

23-2, No.388 Gaoxin 2nd Road,Wuhan East Lake Hi-tech Development Zone, Hubei , P.R.C