



Rag A/B rabbit pAb

Cat No.:ES3318

For research use only

Overview

Product Name	Rag A/B rabbit pAb
Host species	Rabbit
Applications	WB;IHC;IF;ELISA
Species Cross-Reactivity	Human;Mouse;Rat
Recommended dilutions	Western Blot: 1/500 - 1/2000. Immunohistochemistry: 1/100 - 1/300. ELISA: 1/20000. Not yet tested in other applications.
Immunogen	The antiserum was produced against synthesized peptide derived from human RRAGA/B. AA range:264-313
Specificity	Rag A/B Polyclonal Antibody detects endogenous levels of Rag A/B protein.
Formulation	Liquid in PBS containing 50% glycerol, 0.5% BSA and 0.02% sodium azide.
Storage	Store at -20°C. Avoid repeated freeze-thaw cycles.
Protein Name	Ras-related GTP-binding protein A/B
Gene Name	RRAGA/RRAGB
Cellular localization	Cytoplasm . Nucleus . Lysosome . Predominantly cytoplasmic. May shuttle between the cytoplasm and nucleus, depending on the bound nucleotide state (PubMed:8995684, PubMed:9394008). Colocalizes in vivo with adenovirus E3-14.7K mainly to the cytoplasm especially near the nuclear membrane and in discrete foci on or near the plasma membrane (PubMed:8995684). .
Purification	The antibody was affinity-purified from rabbit antiserum by affinity-chromatography using epitope-specific immunogen.
Clonality	Polyclonal
Concentration	1 mg/ml
Observed band	34kD
Human Gene ID	10670/10325
Human Swiss-Prot Number	Q7L523/Q5VZM2





Alternative Names

RRAGA; Ras-related GTP-binding protein A; Rag A; RagA; Adenovirus E3 14.7 kDa-interacting protein 1; FIP-1; RRAGB; Ras-related GTP-binding protein B; Rag B; RagB

Background

function:Involved in the RCC1/Ran-GTPase pathway.

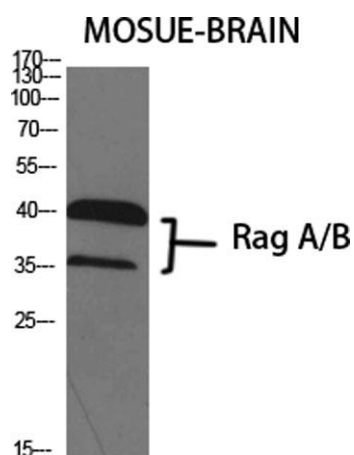
May play a direct role in a TNF-alpha signaling pathway leading to induction of cell death. May alternatively act as a cellular target for adenovirus E3-14.7K, an inhibitor of TNF-alpha functions, thereby affecting cell death. Has guanine

nucleotide-binding activity but undetectable intrinsic GTPase activity.,similarity:Belongs to the GTR/RAG GTP-binding protein family.,subcellular

location:Predominantly cytoplasmic. May shuttle between the cytoplasm and nucleus, depending on the bound nucleotide state. Colocalizes in vivo with adenovirus E3-14.7K mainly to the cytoplasm especially near the nuclear membrane and in discrete foci on or near the plasma

membrane.,subunit:Can occur as a homodimer, or form a heterodimer with RRAGC or RRAGD in a sequence-independent manner. Binds GTP. The GTP-bound form of RRAGA interacts with NOL8.

Interacts with adenovirus E3 14.7 kDa protein.,tissue specificity:Ubiquitously expressed with highest levels of expression in skeletal muscle, heart, and brain.,



Western Blot analysis of various cells using Rag A/B Polyclonal Antibody diluted at 1:1000

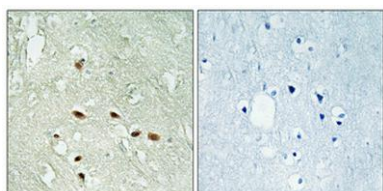




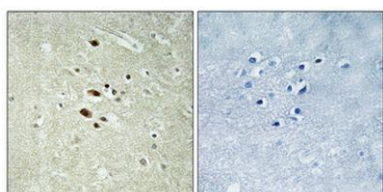
ELK Biotechnology



Western Blot analysis of HepG2 cells using Rag A/B
Polyclonal Antibody diluted at 1:1000



Immunohistochemical analysis of paraffin-embedded
Human brain. Antibody was diluted at 1:100(4°
overnight). High-pressure and temperature
Tris-EDTA,pH8.0 was used for antigen retrieval. Negative
contrl (right) obtained from antibody was pre-absorbed by
i



Immunohistochemical analysis of paraffin-embedded
Human brain. Antibody was diluted at 1:100(4°
overnight). High-pressure and temperature
Tris-EDTA,pH8.0 was used for antigen retrieval. Negative
contrl (right) obtained from antibody was pre-absorbed by
immunogen peptide.



+86-27-59760950

ELKbio@ELKbiotech.com

www.elkbiotech.com

23-2, No.388 Gaoxin 2nd Road,Wuhan East Lake Hi-tech Development Zone, Hubei , P.R.C