

Rad18 rabbit pAb

Cat No.:ES3304

For research use only

Overview

Product Name	Rad18 rabbit pAb
Host species	Rabbit
Applications	WB;IHC
Species Cross-Reactivity	Human;Rat
Recommended dilutions	WB 1:500-2000;IHC-p 1:50-300
Immunogen	The antiserum was produced against synthesized peptide derived from human RAD18. AA range:301-350
Specificity	Rad18 Polyclonal Antibody detects endogenous levels of Rad18 protein.
Formulation	Liquid in PBS containing 50% glycerol, 0.5% BSA and 0.02% sodium azide.
Storage	Store at -20°C. Avoid repeated freeze-thaw cycles.
Protein Name	E3 ubiquitin-protein ligase RAD18
Gene Name	RAD18
Cellular localization	Nucleus . Cytoplasm, cytoskeleton, microtubule organizing center, centrosome . Associates with chromatin (PubMed:25931565). Colocalizes with SLF1 in the nucleus and to centrosomes (PubMed:15632077). Relocalizes with SLF1 to nuclear foci in response to DNA damage (PubMed:22036607). Accumulates with the SLF1-SLF2 and SMC5-SMC6 complexes at replication-coupled DNA interstrand repair and DNA double-strand breaks (DSBs) sites on chromatin in a ubiquitin-dependent manner (PubMed:25931565). .
Purification	The antibody was affinity-purified from rabbit antiserum by affinity-chromatography using epitope-specific immunogen.
Clonality	Polyclonal
Concentration	1 mg/ml
Observed band	56kD
Human Gene ID	56852





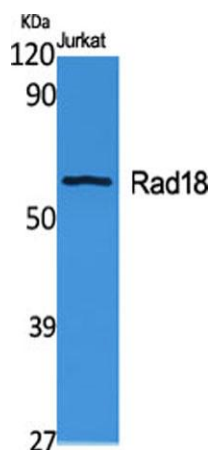
Human Swiss-Prot Number
Alternative Names

Q9NS91

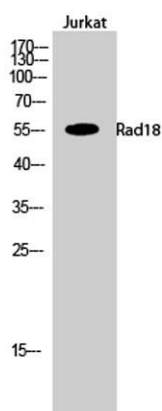
RAD18; RNF73; E3 ubiquitin-protein ligase RAD18;
Postreplication repair protein RAD18; hHR18;
hRAD18; RING finger protein 73

Background

The protein encoded by this gene is highly similar to *S. cerevisiae* DNA damage repair protein Rad18. Yeast Rad18 functions through its interaction with Rad6, which is an ubiquitin-conjugating enzyme required for post-replication repair of damaged DNA. Similar to its yeast counterpart, this protein is able to interact with the human homolog of yeast Rad6 protein through a conserved ring-finger motif. Mutation of this motif results in defective replication of UV-damaged DNA and hypersensitivity to multiple mutagens. [provided by RefSeq, Jul 2008],



Western Blot analysis of various cells using Rad18
Polyclonal Antibody cells nucleus extracted by Minute TM
Cytoplasmic and Nuclear Fractionation kit
(SC-003, Inventbiotech, MN, USA).

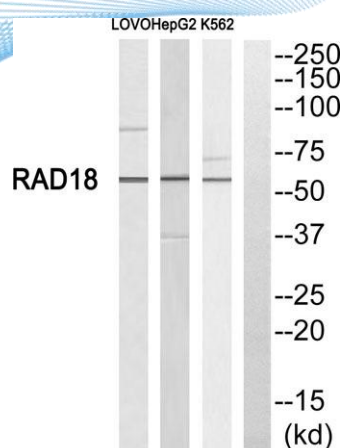


Western Blot analysis of Jurkat cells using Rad18
Polyclonal Antibody cells nucleus extracted by Minute TM
Cytoplasmic and Nuclear Fractionation kit
(SC-003, Inventbiotech, MN, USA).

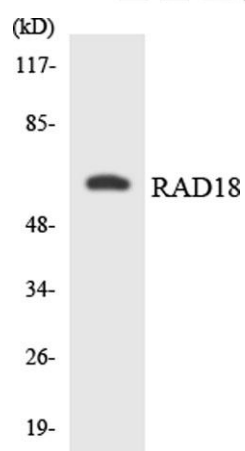




ELK Biotechnology



Western blot analysis of RAD18 Antibody. The lane on the right is blocked with the RAD18 peptide.



Western blot analysis of the lysates from COLO205 cells using RAD18 antibody.



+86-27-59760950

ELKbio@ELKbiotech.com

www.elkbiotech.com

23-2, No.388 Gaoxin 2nd Road, Wuhan East Lake Hi-tech Development Zone, Hubei, P.R.C.