



# Rabaptin-5 $\beta$ rabbit pAb

Cat No.:ES3296

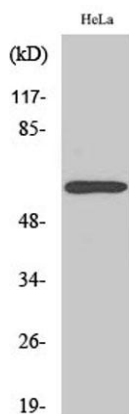
For research use only

## Overview

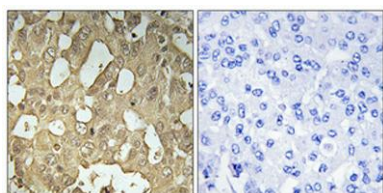
Product Name	Rabaptin-5 $\beta$ rabbit pAb
Host species	Rabbit
Applications	WB;IHC;IF;ELISA
Species Cross-Reactivity	Human;Mouse;Rat
Recommended dilutions	Western Blot: 1/500 - 1/2000. Immunohistochemistry: 1/100 - 1/300. ELISA: 1/10000. Not yet tested in other applications.
Immunogen	The antiserum was produced against synthesized peptide derived from human RABEP2. AA range:353-402
Specificity	Rabaptin-5 $\beta$ Polyclonal Antibody detects endogenous levels of Rabaptin-5 $\beta$ protein.
Formulation	Liquid in PBS containing 50% glycerol, 0.5% BSA and 0.02% sodium azide.
Storage	Store at -20°C. Avoid repeated freeze-thaw cycles.
Protein Name	Rab GTPase-binding effector protein 2
Gene Name	RABEP2
Cellular localization	Cytoplasm . Early endosome . Cytoplasm, cytoskeleton, microtubule organizing center, centrosome . Cytoplasm, cytoskeleton, cilium basal body .
Purification	The antibody was affinity-purified from rabbit antiserum by affinity-chromatography using epitope-specific immunogen.
Clonality	Polyclonal
Concentration	1 mg/ml
Observed band	64kD
Human Gene ID	79874
Human Swiss-Prot Number	Q9H5N1
Alternative Names	RABEP2; RABPT5B; Rab GTPase-binding effector protein 2; Rabaptin-5beta
Background	function:Plays a role in membrane trafficking and in homotypic early endosome



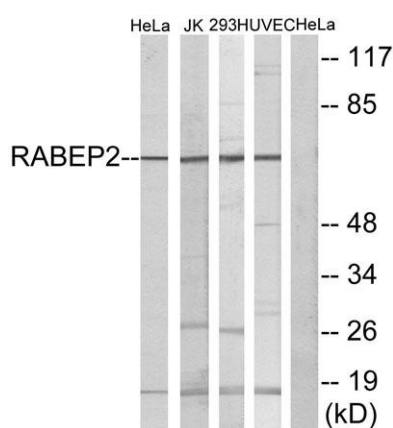
fusion.,similarity:Belongs to the rabaptin family.,subunit:Heterodimer with RABGEF1. The dimer binds RAB5A that has been activated by GTP-binding.,



Western Blot analysis of various cells using Rabaptin-5β Polyclonal Antibody



Immunohistochemical analysis of paraffin-embedded Human breast cancer. Antibody was diluted at 1:100(4° overnight). High-pressure and temperature Tris-EDTA,pH8.0 was used for antigen retrieval. Negative contrl (right) obtained from antibody was pre-absorbed by immunogen peptide.

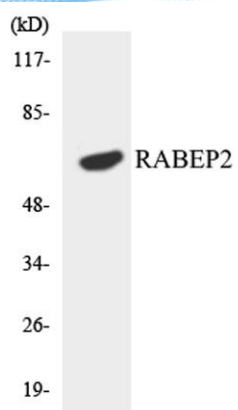


Western blot analysis of lysates from HeLa, Jurkat, 293, and HUVEC cells, using RABEP2 Antibody. The lane on the right is blocked with the synthesized peptide.





**ELK Biotechnology**



Western blot analysis of the lysates from HeLa cells using RABEP2 antibody.



+86-27-59760950

ELKbio@ELKbiotech.com

[www.elkbiotech.com](http://www.elkbiotech.com)

23-2, No.388 Gaoxin 2nd Road,Wuhan East Lake Hi-tech Development Zone, Hubei , P.R.C