

Rab11-FIP4 rabbit pAb

Cat No.:ES3295

For research use only

Overview

Product Name	Rab11-FIP4 rabbit pAb
Host species	Rabbit
Applications	WB;IHC;IF;ELISA
Species Cross-Reactivity	Human;Mouse
Recommended dilutions	Western Blot: 1/500 - 1/2000. Immunohistochemistry: 1/100 - 1/300. ELISA: 1/40000. Not yet tested in other applications.
Immunogen	The antiserum was produced against synthesized peptide derived from human RAB11FIP4. AA range:452-501
Specificity	Rab11-FIP4 Polyclonal Antibody detects endogenous levels of Rab11-FIP4 protein.
Formulation	Liquid in PBS containing 50% glycerol, 0.5% BSA and 0.02% sodium azide.
Storage	Store at -20°C. Avoid repeated freeze-thaw cycles.
Protein Name	Rab11 family-interacting protein 4
Gene Name	RAB11FIP4
Cellular localization	Endosome . Cytoplasm, cytoskeleton, spindle . Cytoplasm, cytoskeleton, microtubule organizing center, centrosome . Recycling endosome membrane ; Peripheral membrane protein. Cleavage furrow . Midbody . Cytoplasmic vesicle . Recruited to the cleavage furro
Purification	The antibody was affinity-purified from rabbit antiserum by affinity-chromatography using epitope-specific immunogen.
Clonality	Polyclonal
Concentration	1 mg/ml
Observed band	95kD
Human Gene ID	84440
Human Swiss-Prot Number	Q86YS3
Alternative Names	RAB11FIP4; ARFO2; KIAA1821; Rab11 family-interacting protein 4; FIP4-Rab11;

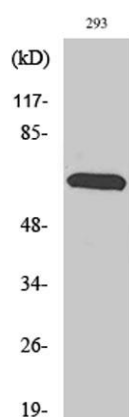




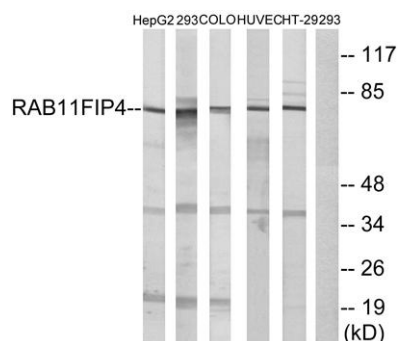
Background

Rab11-FIP4; Arfophilin-2

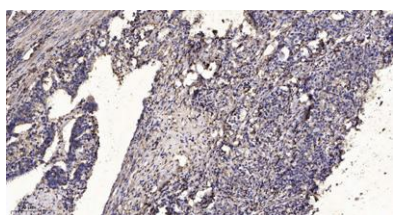
Proteins of the large Rab GTPase family (see RAB1A; MIM 179508) have regulatory roles in the formation, targeting, and fusion of intracellular transport vesicles. RAB11FIP4 is one of many proteins that interact with and regulate Rab GTPases (Hales et al., 2001 [PubMed 11495908]).[supplied by OMIM, Apr 2008],



Western Blot analysis of various cells using Rab11-FIP4 Polyclonal Antibody



Western blot analysis of lysates from 293, COLO, HUVEC, HepG2, and HT-29 cells, using RAB11FIP4 Antibody. The lane on the right is blocked with the synthesized peptide.



Immunohistochemical analysis of paraffin-embedded human Gastric adenocarcinoma. 1, Antibody was diluted at 1:200(4° overnight). 2, Tris-EDTA,pH9.0 was used for antigen retrieval. 3,Secondary antibody was diluted at 1:200(room temperature, 45min).

