

# Rab 7L1 rabbit pAb

Cat No.:ES3293

For research use only

## Overview

Product Name	Rab 7L1 rabbit pAb
Host species	Rabbit
Applications	WB;ELISA;IHC
Species Cross-Reactivity	Human;Mouse;Rat
Recommended dilutions	WB 1:500-2000;IHC-p 1:50-300; ELISA 2000-20000
Immunogen	The antiserum was produced against synthesized peptide derived from human RAB7L1. AA range:115-164
Specificity	Rab 7L1 Polyclonal Antibody detects endogenous levels of Rab 7L1 protein.
Formulation	Liquid in PBS containing 50% glycerol, 0.5% BSA and 0.02% sodium azide.
Storage	Store at -20°C. Avoid repeated freeze-thaw cycles.
Protein Name	Ras-related protein Rab-7L1
Gene Name	RAB7L1
Cellular localization	Cell membrane ; Lipid-anchor ; Cytoplasmic side . Cytoplasm . Cytoplasm, perinuclear region . Golgi apparatus . Golgi apparatus, trans-Golgi network . Vacuole . Cytoplasm, cytoskeleton . Colocalizes with LRRK2 along tubular structures emerging from Golgi apparatus (PubMed:29212815). Colocalizes with GM130 at the Golgi apparatus (PubMed:22042847). Colocalizes with dynamic tubules emerging from and retracting to the Golgi apparatus (PubMed:22042847). Colocalizes with TGN46 at the trans-Golgi network (TGN) (PubMed:24788816). In Salmonella enterica serovar Typhi (S.Typhi) infected epithelial cells, is recruited and colocalized with both S.Typhi-containing vacuoles and dynamic tubules as well as those emerging from the vacuole toward the cell periphery (PubMed:22042847). .
Purification	The antibody was affinity-purified from rabbit antiserum by affinity-chromatography using





**Clonality**

**Concentration**

**Observed band**

**Human Gene ID**

**Human Swiss-Prot Number**

**Alternative Names**

**Background**

epitope-specific immunogen.

Polyclonal

1 mg/ml

28kD

8934

O14966

RAB7L1; Ras-related protein Rab-7L1; Rab-7-like protein 1

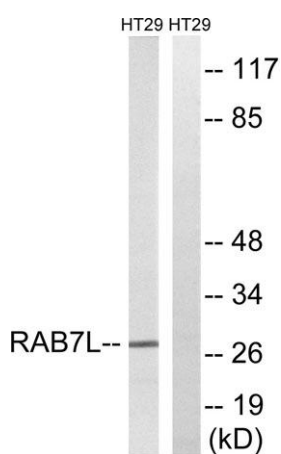
similarity:Belongs to the small GTPase superfamily.

Rab family.,tissue specificity:Ubiquitous.,



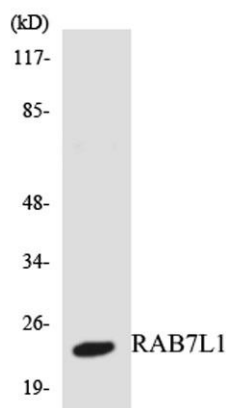
Western Blot analysis of various cells using Rab 7L1

Polyclonal Antibody

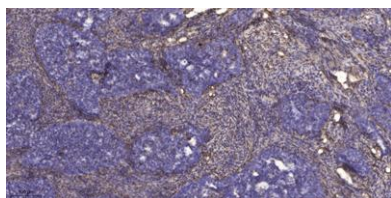


Western blot analysis of lysates from HT-29 cells, using RAB7L1 Antibody. The lane on the right is blocked with the synthesized peptide.





Western blot analysis of the lysates from HepG2 cells using RAB7L1 antibody.



Immunohistochemical analysis of paraffin-embedded human cervical carcinoma. 1, Antibody was diluted at 1:200(4° overnight). 2, Tris-EDTA,pH9.0 was used for antigen retrieval. 3,Secondary antibody was diluted at 1:200(room temperature, 45min).

