

Rab 34 rabbit pAb

Cat No.:ES3290

For research use only

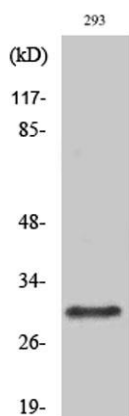
Overview

Product Name	Rab 34 rabbit pAb
Host species	Rabbit
Applications	WB;IHC;IF;ELISA
Species Cross-Reactivity	Human;Rat;Mouse;
Recommended dilutions	Western Blot: 1/500 - 1/2000.IHC-p 1:50-200 ELISA: 1/5000. Not yet tested in other applications.
Immunogen	The antiserum was produced against synthesized peptide derived from human RAB34. AA range:206-255
Specificity	Rab 34 Polyclonal Antibody detects endogenous levels of Rab 34 protein.
Formulation	Liquid in PBS containing 50% glycerol, 0.5% BSA and 0.02% sodium azide.
Storage	Store at -20°C. Avoid repeated freeze-thaw cycles.
Protein Name	Ras-related protein Rab-34
Gene Name	RAB34
Cellular localization	Cytoplasm . Golgi apparatus . Cytoplasmic vesicle, phagosome . Cytoplasmic vesicle, phagosome membrane ; Lipid-anchor ; Cytoplasmic side . Cell projection, cilium . Recruited to phagosomes containing S.aureus or M.tuberculosis (PubMed:21255211). .
Purification	The antibody was affinity-purified from rabbit antiserum by affinity-chromatography using epitope-specific immunogen.
Clonality	Polyclonal
Concentration	1 mg/ml
Observed band	29kD
Human Gene ID	83871
Human Swiss-Prot Number	Q9BZG1
Alternative Names	RAB34; RAB39; RAH; Ras-related protein Rab-34; Ras-related protein Rab-39; Ras-related protein Rah
Background	This gene encodes a protein belonging to the RAB

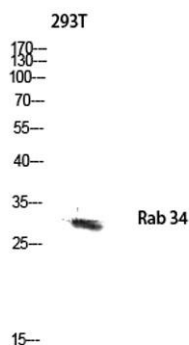




family of proteins, which are small GTPases involved in protein transport. This family member is a Golgi-bound member of the secretory pathway that is involved in the repositioning of lysosomes and the activation of macropinocytosis. Alternative splicing of this gene results in multiple transcript variants. This gene overlaps and shares exon structure with the nine-amino acid residue-repeats (NARR) gene, which encodes a functionally distinct nucleolar protein from a different reading frame. [provided by RefSeq, Jan 2012],



Western Blot analysis of various cells using Rab 34
Polyclonal Antibody diluted at 1:500

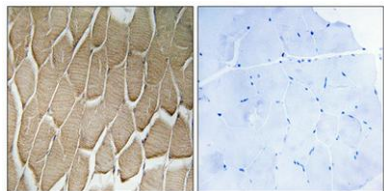


Western blot analysis of 293T lysis using Rab 34 antibody.
Antibody was diluted at 1:500





Immunohistochemical analysis of paraffin-embedded Human skeletal muscle. Antibody was diluted at 1:100(4° overnight). High-pressure and temperature Tris-EDTA,pH8.0 was used for antigen retrieval. Negative contrl (right) obtained from antibody was pre-abs



Immunohistochemistry analysis of paraffin-embedded human skeletal muscle, using RAB34 Antibody. The picture on the right is blocked with the synthesized peptide.

