

Rab 3 GAP p150 rabbit pAb

Cat No.:ES3289

For research use only

Overview

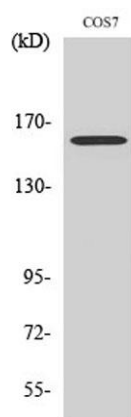
Product Name	Rab 3 GAP p150 rabbit pAb
Host species	Rabbit
Applications	WB;IHC;IF;ELISA
Species Cross-Reactivity	Human;Mouse;Rat;Monkey
Recommended dilutions	Western Blot: 1/500 - 1/2000. Immunohistochemistry: 1/100 - 1/300. ELISA: 1/40000. Not yet tested in other applications.
Immunogen	The antiserum was produced against synthesized peptide derived from human RAB3GAP2. AA range:417-466
Specificity	Rab 3 GAP p150 Polyclonal Antibody detects endogenous levels of Rab 3 GAP p150 protein.
Formulation	Liquid in PBS containing 50% glycerol, 0.5% BSA and 0.02% sodium azide.
Storage	Store at -20°C. Avoid repeated freeze-thaw cycles.
Protein Name	Rab3 GTPase-activating protein non-catalytic subunit
Gene Name	RAB3GAP2
Cellular localization	Cytoplasm. In neurons, it is enriched in the synaptic soluble fraction.
Purification	The antibody was affinity-purified from rabbit antiserum by affinity-chromatography using epitope-specific immunogen.
Clonality	Polyclonal
Concentration	1 mg/ml
Observed band	156kD
Human Gene ID	25782
Human Swiss-Prot Number	Q9H2M9
Alternative Names	RAB3GAP2; KIAA0839; Rab3 GTPase-activating protein non-catalytic subunit; RGAP-iso; Rab3 GTPase-activating protein 150 kDa subunit; Rab3-GAP p150; Rab3-GAP150; Rab3-GAP regulatory subunit



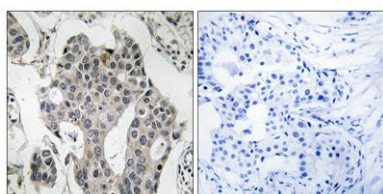


Background

The protein encoded by this gene belongs to the RAB3 protein family, members of which are involved in regulated exocytosis of neurotransmitters and hormones. This protein forms the Rab3 GTPase-activating complex with RAB3GAP1, where it constitutes the regulatory subunit, whereas the latter functions as the catalytic subunit. This gene has the highest level of expression in the brain, consistent with it having a key role in neurodevelopment. Mutations in this gene are associated with Martsolf syndrome.[provided by RefSeq, Oct 2009],



Western Blot analysis of various cells using Rab 3 GAP p150 Polyclonal Antibody

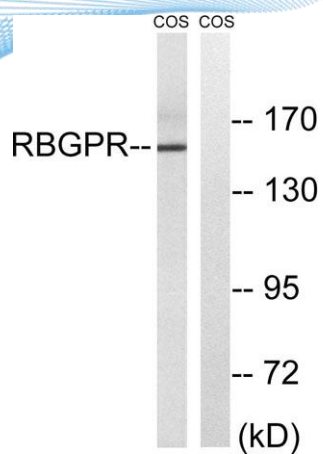


Immunohistochemistry analysis of paraffin-embedded human breast carcinoma tissue, using RAB3GAP2 Antibody. The picture on the right is blocked with the synthesized peptide.





ELK Biotechnology



Western blot analysis of lysates from COS cells, using RAB3GAP2 Antibody. The lane on the right is blocked with the synthesized peptide.



+86-27-59760950

ELKbio@ELKbiotech.com

www.elkbiotech.com

23-2, No.388 Gaoxin 2nd Road, Wuhan East Lake Hi-tech Development Zone, Hubei, P.R.C.