



# PRAS40 rabbit pAb

Cat No.:ES3257

For research use only

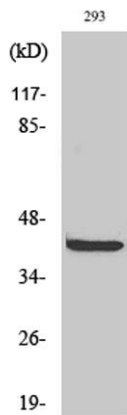
## Overview

Product Name	PRAS40 rabbit pAb
Host species	Rabbit
Applications	WB;IHC;IF;ELISA
Species Cross-Reactivity	Human;Mouse;Rat
Recommended dilutions	Western Blot: 1/500 - 1/2000. Immunohistochemistry: 1/100 - 1/300. ELISA: 1/5000. Not yet tested in other applications.
Immunogen	The antiserum was produced against synthesized peptide derived from human Akt1 S1. AA range:207-256
Specificity	PRAS40 Polyclonal Antibody detects endogenous levels of PRAS40 protein.
Formulation	Liquid in PBS containing 50% glycerol, 0.5% BSA and 0.02% sodium azide.
Storage	Store at -20°C. Avoid repeated freeze-thaw cycles.
Protein Name	Proline-rich AKT1 substrate 1
Gene Name	AKT1S1
Cellular localization	Cytoplasm, cytosol . Found in the cytosolic fraction of the brain. .
Purification	The antibody was affinity-purified from rabbit antiserum by affinity-chromatography using epitope-specific immunogen.
Clonality	Polyclonal
Concentration	1 mg/ml
Observed band	40kD
Human Gene ID	84335
Human Swiss-Prot Number	Q96B36
Alternative Names	AKT1S1; PRAS40; Proline-rich AKT1 substrate 1; 40 kDa proline-rich AKT substrate
Background	AKT1S1 is a proline-rich substrate of AKT (MIM 164730) that binds 14-3-3 protein (see YWHAH, MIM 113508) when phosphorylated (Kovacina et al., 2003 [PubMed 12524439]).[supplied by OMIM, Mar

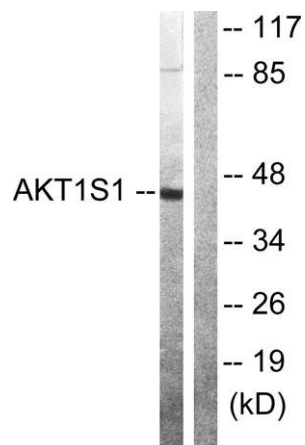
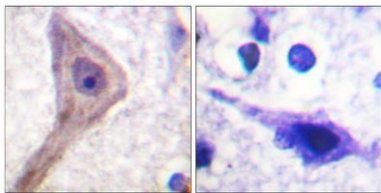


2008],

Western Blot analysis of various cells using PRAS40 Polyclonal Antibody



Immunohistochemistry analysis of paraffin-embedded human brain tissue, using Akt1 S1 Antibody. The picture on the right is blocked with the synthesized peptide.



Western blot analysis of lysates from 293 cells, using Akt1 S1 Antibody. The lane on the right is blocked with the synthesized peptide.

