



PRAF2 rabbit pAb

Cat No.:ES3256

For research use only

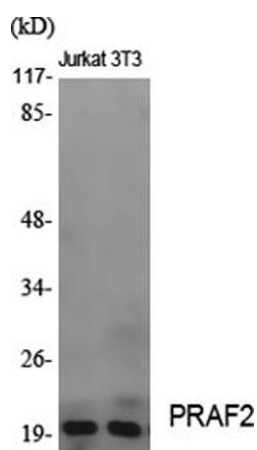
Overview

Product Name	PRAF2 rabbit pAb
Host species	Rabbit
Applications	WB;IHC;IF;ELISA
Species Cross-Reactivity	Human;Mouse;Rat
Recommended dilutions	Western Blot: 1/500 - 1/2000. Immunohistochemistry: 1/100 - 1/300. Immunofluorescence: 1/200 - 1/1000. ELISA: 1/40000. Not yet tested in other applications.
Immunogen	The antiserum was produced against synthesized peptide derived from human JM4. AA range:129-178
Specificity	PRAF2 Polyclonal Antibody detects endogenous levels of PRAF2 protein.
Formulation	Liquid in PBS containing 50% glycerol, 0.5% BSA and 0.02% sodium azide.
Storage	Store at -20°C. Avoid repeated freeze-thaw cycles.
Protein Name	PRA1 family protein 2
Gene Name	PRAF2
Cellular localization	Endosome membrane ; Multi-pass membrane protein .
Purification	The antibody was affinity-purified from rabbit antiserum by affinity-chromatography using epitope-specific immunogen.
Clonality	Polyclonal
Concentration	1 mg/ml
Observed band	20kD
Human Gene ID	11230
Human Swiss-Prot Number	O60831
Alternative Names	PRAF2; JM4; PRA1 family protein 2
Background	function:May be involved in ER/Golgi transport and vesicular traffic. Plays a proapoptotic role in cerulenin-induced neuroblastoma apoptosis.,similarity:Belongs to the PRA1

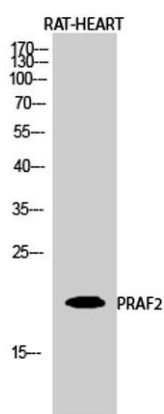




family,subunit:Interacts with CCR5 and GDE1.,tissue specificity:Strong expression in the brain, small intestine, lung, spleen, and pancreas as well as in tumor tissues of the breast, colon, lung and ovary, with a weaker expression in normal tissues of the same patient. High expression in neuroblastic tumors. Strongly expressed in Purkinje cells and more moderately in cells of the molecular and the granular layers in the cerebellum. Detected in neuronal cells, but not in non-neuronal cells in the cerebral cortex, hippocampus, and lateral ventricles.,



Western Blot analysis of various cells using PRAF2
Polyclonal Antibody diluted at 1:2000



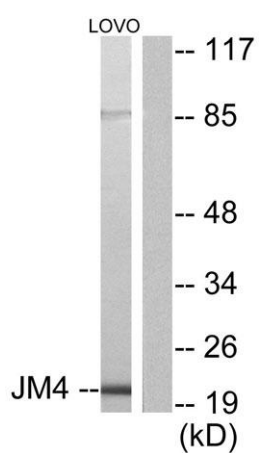
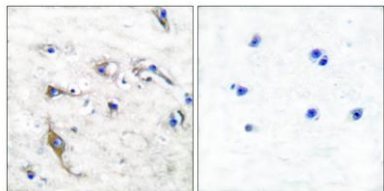
Western Blot analysis of RAT-HEART cells using PRAF2
Polyclonal Antibody diluted at 1:2000





ELK Biotechnology

Immunohistochemistry analysis of paraffin-embedded human brain tissue, using JM4 Antibody. The picture on the right is blocked with the synthesized peptide.



Western blot analysis of lysates from LOVO cells, using JM4 Antibody. The lane on the right is blocked with the synthesized peptide.



+86-27-59760950

ELKbio@ELKbiotech.com

www.elkbiotech.com

23-2, No.388 Gaoxin 2nd Road, Wuhan East Lake Hi-tech Development Zone, Hubei, P.R.C.