

PPP4R1L rabbit pAb

Cat No.:ES3254

For research use only

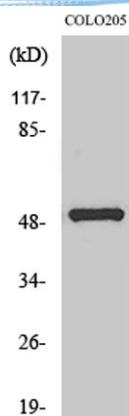
Overview

Product Name	PPP4R1L rabbit pAb
Host species	Rabbit
Applications	WB;ELISA
Species Cross-Reactivity	Human;Monkey
Recommended dilutions	Western Blot: 1/500 - 1/2000. ELISA: 1/10000. Not yet tested in other applications.
Immunogen	The antiserum was produced against synthesized peptide derived from human PPP4R1L. AA range:191-240
Specificity	PPP4R1L Polyclonal Antibody detects endogenous levels of PPP4R1L protein.
Formulation	Liquid in PBS containing 50% glycerol, 0.5% BSA and 0.02% sodium azide.
Storage	Store at -20°C. Avoid repeated freeze-thaw cycles.
Protein Name	Putative serine/threonine-protein phosphatase 4 regulatory subunit 1-like
Gene Name	PPP4R1L
Cellular localization	
Purification	The antibody was affinity-purified from rabbit antiserum by affinity-chromatography using epitope-specific immunogen.
Clonality	Polyclonal
Concentration	1 mg/ml
Observed band	50kD
Human Gene ID	55370
Human Swiss-Prot Number	Q9P1A2
Alternative Names	PPP4R1L; C20orf192; Putative serine/threonine-protein phosphatase 4 regulatory subunit 1-like
Background	function:May be a regulatory subunit of serine/threonine-protein phosphatase 4.,similarity:Contains 4 HEAT repeats.,

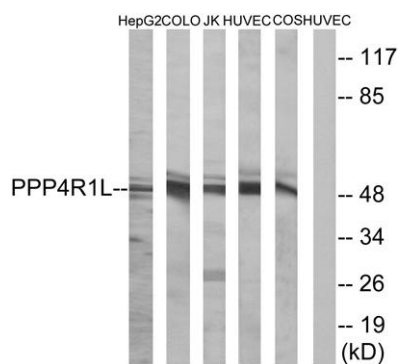




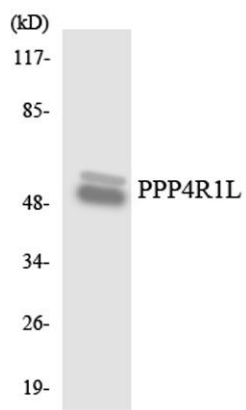
ELK Biotechnology



Western Blot analysis of various cells using PPP4R1L Polyclonal Antibody



Western blot analysis of lysates from COLO, HUVEC, HepG2, Jurkat, and COS cells, using PPP4R1L Antibody. The lane on the right is blocked with the synthesized peptide.



Western blot analysis of the lysates from HepG2 cells using PPP4R1L antibody.



+86-27-59760950

ELKbio@ELKbiotech.com

www.elkbiotech.com

23-2, No.388 Gaoxin 2nd Road, Wuhan East Lake Hi-tech Development Zone, Hubei, P.R.C.