

PPP2R3C rabbit pAb

Cat No.:ES3253

For research use only

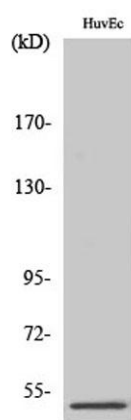
Overview

Product Name	PPP2R3C rabbit pAb
Host species	Rabbit
Applications	WB;ELISA;IHC
Species Cross-Reactivity	Human;Mouse;Rat
Recommended dilutions	WB 1:500-2000;IHC-p 1:50-300; ELISA 2000-20000
Immunogen	The antiserum was produced against synthesized peptide derived from human PPP2R3C. AA range:165-214
Specificity	PPP2R3C Polyclonal Antibody detects endogenous levels of PPP2R3C protein.
Formulation	Liquid in PBS containing 50% glycerol, 0.5% BSA and 0.02% sodium azide.
Storage	Store at -20°C. Avoid repeated freeze-thaw cycles.
Protein Name	Serine/threonine-protein phosphatase 2A regulatory subunit B" subunit gamma
Gene Name	PPP2R3C
Cellular localization	Nucleus . Cytoplasm . Excluded from the nucleoli. Localization is cell cycle-dependent. Localizes to the cytoplasm during cytokinesis. .
Purification	The antibody was affinity-purified from rabbit antiserum by affinity-chromatography using epitope-specific immunogen.
Clonality	Polyclonal
Concentration	1 mg/ml
Observed band	55kD
Human Gene ID	55012
Human Swiss-Prot Number	Q969Q6
Alternative Names	PPP2R3C; C14orf10; G5PR; Serine/threonine-protein phosphatase 2A regulatory subunit B" subunit gamma; Protein phosphatase subunit G5PR; Rhabdomyosarcoma antigen MU-RMS-40.6A/6C
Background	This gene encodes a regulatory subunit of the serine/threonine phosphatase, protein phosphatase

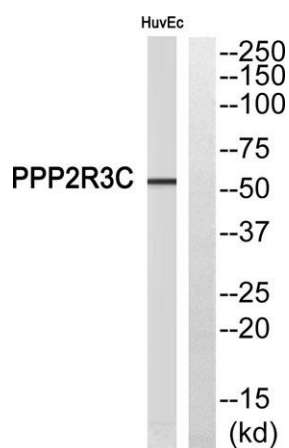




2. This protein is localized to both nuclear and cytoplasmic regions depending on cell cycle phase. Homozygous conditional knockout mice for this gene exhibit reduced numbers and impaired proliferation of immune system B cells. This protein may regulate the expression of the P-glycoprotein ATP-binding cassette transporter through its phosphatase activity. Alternative splicing results in multiple transcript variants. [provided by RefSeq, Feb 2015],



Western Blot analysis of various cells using PPP2R3C Polyclonal Antibody

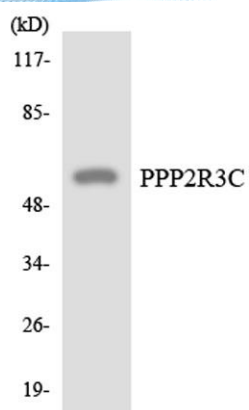


Western blot analysis of PPP2R3C Antibody. The lane on the right is blocked with the PPP2R3C peptide.

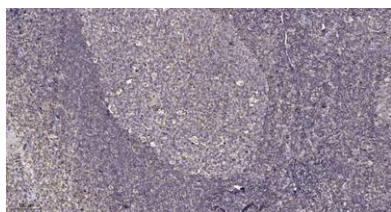




ELK Biotechnology



Western blot analysis of the lysates from HepG2 cells using PPP2R3C antibody.



Immunohistochemical analysis of paraffin-embedded human tonsil. 1, Antibody was diluted at 1:200(4° overnight). 2, Tris-EDTA,pH9.0 was used for antigen retrieval. 3,Secondary antibody was diluted at 1:200(room temperature, 45min).



+86-27-59760950

ELKbio@ELKbiotech.com

www.elkbiotech.com

23-2, No.388 Gaoxin 2nd Road,Wuhan East Lake Hi-tech Development Zone, Hubei , P.R.C