

# PP32R1 rabbit pAb

Cat No.:ES3250

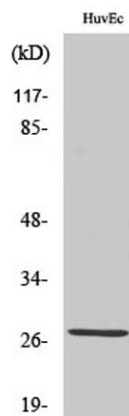
For research use only

## Overview

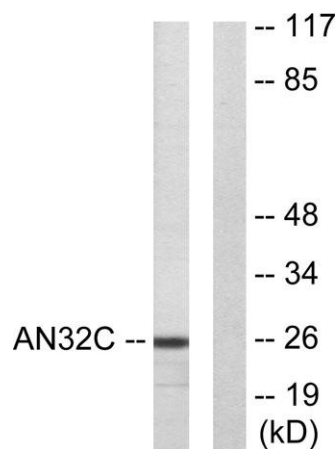
Product Name	PP32R1 rabbit pAb
Host species	Rabbit
Applications	WB;IHC
Species Cross-Reactivity	Human;Rat;Mouse;
Recommended dilutions	WB 1:500-2000;IHC-p 1:50-300
Immunogen	The antiserum was produced against synthesized peptide derived from human ANP32C. AA range:121-170
Specificity	PP32R1 Polyclonal Antibody detects endogenous levels of PP32R1 protein.
Formulation	Liquid in PBS containing 50% glycerol, 0.5% BSA and 0.02% sodium azide.
Storage	Store at -20°C. Avoid repeated freeze-thaw cycles.
Protein Name	Acidic leucine-rich nuclear phosphoprotein 32 family member C
Gene Name	ANP32C
Cellular localization	nucleus,
Purification	The antibody was affinity-purified from rabbit antiserum by affinity-chromatography using epitope-specific immunogen.
Clonality	Polyclonal
Concentration	1 mg/ml
Observed band	26kD
Human Gene ID	23520
Human Swiss-Prot Number	O43423
Alternative Names	ANP32C; PP32R1; Acidic leucine-rich nuclear phosphoprotein 32 family member C; Phosphoprotein 32-related protein 1; Tumorigenic protein pp32r1
Background	Phosphoprotein 32 (PP32) is a tumor suppressor that can inhibit several types of cancers, including prostate and breast cancers. The protein encoded by this gene is one of at least two proteins that are



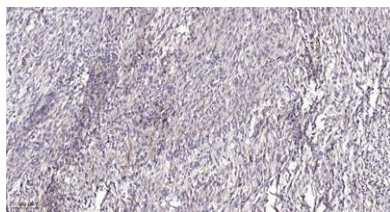
similar in amino acid sequence to PP32 and are part of the same acidic nuclear phosphoprotein gene family. However, unlike PP32, the encoded protein is tumorigenic. The tumor suppressor function of PP32 has been localized to a 25 amino acid region that is divergent between PP32 and the protein encoded by this gene. This gene does not contain introns. [provided by RefSeq, Jul 2008],



Western Blot analysis of various cells using PP32R1 Polyclonal Antibody diluted at 1:1000



Western blot analysis of lysates from HUVEC cells, using ANP32C Antibody. The lane on the right is blocked with the synthesized peptide.



Immunohistochemical analysis of paraffin-embedded human Colon cancer. 1, Antibody was diluted at 1:200(4° overnight). 2, Tris-EDTA,pH9.0 was used for antigen retrieval. 3,Secondary antibody was diluted at 1:200(room temperature, 45min).

