

# PP2C $\kappa$ rabbit pAb

Cat No.:ES3249

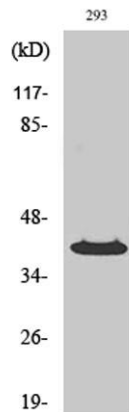
For research use only

## Overview

Product Name	PP2C $\kappa$ rabbit pAb
Host species	Rabbit
Applications	WB;IHC;IF;ELISA
Species Cross-Reactivity	Human;Rat;Mouse;
Recommended dilutions	Western Blot: 1/500 - 1/2000. Immunohistochemistry: 1/100 - 1/300. ELISA: 1/40000. Not yet tested in other applications.
Immunogen	The antiserum was produced against synthesized peptide derived from human PPM1K. AA range:205-254
Specificity	PP2C $\kappa$ Polyclonal Antibody detects endogenous levels of PP2C $\kappa$ protein.
Formulation	Liquid in PBS containing 50% glycerol, 0.5% BSA and 0.02% sodium azide.
Storage	Store at -20°C. Avoid repeated freeze-thaw cycles.
Protein Name	Protein phosphatase 1K mitochondrial
Gene Name	PPM1K
Cellular localization	Mitochondrion matrix .
Purification	The antibody was affinity-purified from rabbit antiserum by affinity-chromatography using epitope-specific immunogen.
Clonality	Polyclonal
Concentration	1 mg/ml
Observed band	45kD
Human Gene ID	152926
Human Swiss-Prot Number	Q8N3J5
Alternative Names	PPM1K; PP2CM; Protein phosphatase 1K; mitochondrial; PP2C domain-containing protein phosphatase 1K; PP2C-like mitochondrial protein; PP2C-type mitochondrial phosphoprotein phosphatase; PTMP; Protein phosphatase 2C isoform kappa; PP2C-kappa
Background	This gene encodes a member of the PPM family of

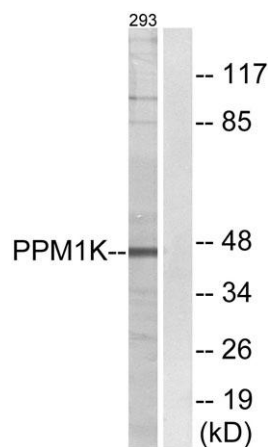
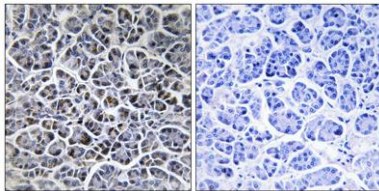


Mn<sup>2+</sup>/Mg<sup>2+</sup>-dependent protein phosphatases. The encoded protein, essential for cell survival and development, is targeted to the mitochondria where it plays a key role in regulation of the mitochondrial permeability transition pore. [provided by RefSeq, Sep 2012],



Western Blot analysis of various cells using PP2Cκ Polyclonal Antibody

Immunohistochemistry analysis of paraffin-embedded human pancreas tissue, using PPM1K Antibody. The picture on the right is blocked with the synthesized peptide.

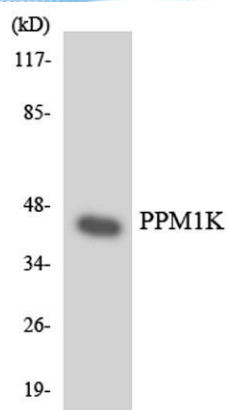


Western blot analysis of lysates from 293 cells, using PPM1K Antibody. The lane on the right is blocked with the synthesized peptide.





**ELK Biotechnology**



Western blot analysis of the lysates from HeLa cells using PPM1K antibody.



+86-27-59760950

ELKbio@ELKbiotech.com

[www.elkbiotech.com](http://www.elkbiotech.com)

23-2, No.388 Gaoxin 2nd Road,Wuhan East Lake Hi-tech Development Zone, Hubei , P.R.C