

# PP2A-A $\beta$ rabbit pAb

Cat No.:ES3247

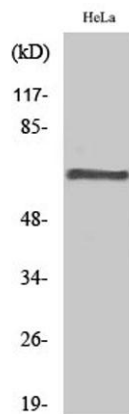
For research use only

## Overview

|                          |   |
|--------------------------|---|
| Product Name             | PP2A-A $\beta$ rabbit pAb   |
| Host species             | Rabbit  |
| Applications             | WB;IHC;IF;ELISA   |
| Species Cross-Reactivity | Human;Mouse;Rat   |
| Recommended dilutions    | Western Blot: 1/500 - 1/2000.IHC-p:1:50-300 ELISA: 1/20000. Not yet tested in other applications.   |
| Immunogen                | The antiserum was produced against synthesized peptide derived from human PPP2R1B. AA range:552-601   |
| Specificity              | PP2A-A $\beta$ Polyclonal Antibody detects endogenous levels of PP2A-A $\beta$ protein.   |
| Formulation              | Liquid in PBS containing 50% glycerol, 0.5% BSA and 0.02% sodium azide.   |
| Storage                  | Store at -20°C. Avoid repeated freeze-thaw cycles.  |
| Protein Name             | Serine/threonine-protein phosphatase 2A 65 kDa regulatory subunit A beta isoform  |
| Gene Name                | PPP2R1B   |
| Cellular localization    | membrane raft,extracellular exosome,  |
| Purification             | The antibody was affinity-purified from rabbit antiserum by affinity-chromatography using epitope-specific immunogen.                                       |
| Clonality                | Polyclonal  |
| Concentration            | 1 mg/ml   |
| Observed band            | 66kD  |
| Human Gene ID            | 5519  |
| Human Swiss-Prot Number  | P30154  |
| Alternative Names        | PPP2R1B; Serine/threonine-protein phosphatase 2A 65 kDa regulatory subunit A beta isoform; PP2A subunit A isoform PR65-beta; PP2A subunit A isoform R1-beta |
| Background               | This gene encodes a constant regulatory subunit of protein phosphatase 2. Protein phosphatase 2 is one of the four major Ser/Thr phosphatases, and it is    |

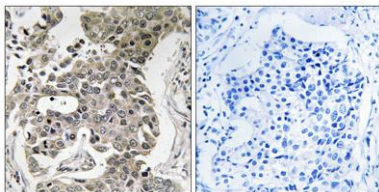


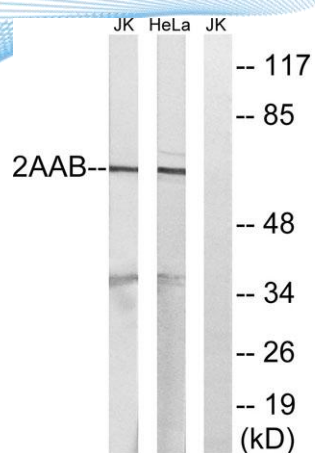
implicated in the negative control of cell growth and division. It consists of a common heteromeric core enzyme, which is composed of a catalytic subunit and a constant regulatory subunit, that associates with a variety of regulatory subunits. The constant regulatory subunit A serves as a scaffolding molecule to coordinate the assembly of the catalytic subunit and a variable regulatory B subunit. This gene encodes a beta isoform of the constant regulatory subunit A. Mutations in this gene have been associated with some lung and colon cancers. Alternatively spliced transcript variants have been described. [provided by RefSeq, Apr 2010],



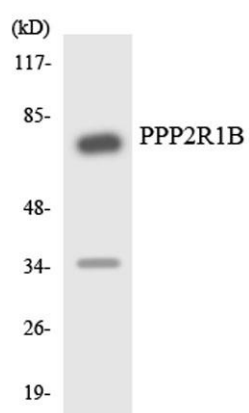
Western Blot analysis of various cells using PP2A-A $\beta$  Polyclonal Antibody

Immunohistochemistry analysis of paraffin-embedded human breast carcinoma tissue, using PPP2R1B Antibody. The picture on the right is blocked with the synthesized peptide.





Western blot analysis of lysates from HeLa and Jurkat cells, using PPP2R1B Antibody. The lane on the right is blocked with the synthesized peptide.



Western blot analysis of the lysates from Jurkat cells using PPP2R1B antibody.

